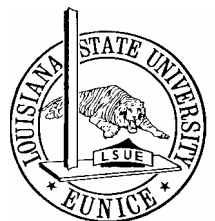


LOUISIANA STATE UNIVERSITY AT EUNICE

FACT BOOK – FALL 2004



Louisiana State University – Eunice
Office of Institutional Research
December 2004



**Louisiana State University at Eunice
Office of Institutional Research and Effectiveness
P.O. Box 1129
Eunice, LA 70535**

Telephone: (337) 550-1307

Fax: (337) 550-1306

**Toll Free In-State: 888-FOR-LSUE
888-367-5783**

Email: [Amanda Darbonne - adarbonn@lsue.edu](mailto:adarbonn@lsue.edu)

[Ron Wright - rwright@lsue.edu](mailto:rwright@lsue.edu)

Internet: WWW.LSUE.EDU/IR

GENERAL INFORMATION

University Profile – Fall 2004

Headcount Enrollment:	3,071
Full-time:	1,818 (59%)
Part-time:	1,253 (41%)
Full-Time Equivalents:	2,689 (1 FTE = 12 SCH)
Tri-parish Enrollment:	1,969 (64%)
<i>(Acadia, St. Landry, and Evangeline Parishes)</i>	

The female population at LSUE represents 72% of the total enrollment.

Minority enrollment at LSUE has reached an all-time high of 27.5%.

The average (mean) age of the student body is 25.
 (mode) 18
 (median) 43

The youngest student is age 16.
The oldest student is age 82.

Enrollment by Curriculum Type:

Associate Degree:	1,873 (61%)
Transfer Program:	976 (32%)
Undecided:	222 (7%)

Average ACT Score: 18.34

LSUE employs a faculty of 151 of which 59% are full-time.

LSUE employs a staff of 101 of which 97% are full-time.

Total budgeted expenses: \$19,705,616.

The university library contains 68,232 volumes and subscribes to 205 periodicals.

GENERAL INFORMATION

History of the University

The University System

The Louisiana State University and Agricultural and Mechanical College System is a multicampus, multipurpose system of higher education serving all of Louisiana. It exerts a major influence on the economic, social, and cultural life of the citizens of the state. The LSU System is composed of nine institutions located throughout the state. Two of these—LSU and the University of New Orleans—are full universities, providing broad areas of undergraduate and graduate instruction as well as extensive research programs. LSU in Shreveport is at present primarily a four-year undergraduate degree-granting campus which offers graduate study only in selected fields. LSU at Alexandria is a four-year campus, and LSU at Eunice is a two-year campus. The LSU Medical Center, which is also part of the LSU System, has three campuses: two in New Orleans and one in Shreveport. The Center includes the Schools of Medicine, Dentistry, Nursing, and Allied Health Professions, as well as a Graduate School. The Hebert Law Center is located in Baton Rouge. The Pennington Biomedical Research Center, also located in Baton Rouge, promotes healthier lives through research and education in nutrition and preventive medicine.

The LSU Agricultural Center, established in 1972 by the LSU Board of Supervisors as an autonomous element of the LSU System, includes both the Agricultural Experiment Station and the Cooperative Extension Service as well as their statewide agricultural facilities. Administrative headquarters for the Center is located at Baton Rouge. The governing body of the LSU System is a Board of Supervisors appointed by the Governor. The System is headed by a president. The chief administrative officer for each campus is a chancellor.

Establishment of LSU at Eunice

LSU at Eunice is located just southwest of Eunice along Louisiana Highway 755 on a 196-acre tract of land originally belonging to the Arnold LeDoux family, which donated fifty acres for the establishment of the University campus. The University originally purchased an additional fifty acres and later acquired another 95.83 acres for future expansion. The campus is located in Acadia Parish, near the boundaries of Evangeline and St. Landry Parishes, in a rich and fertile section of Southwest Louisiana referred to as “the tri-parish area.”

The LSU Board of Supervisors was authorized by Revised Statute 17:1521 to establish Louisiana State University at Eunice. Acting under this authority, the Board set in motion the chain of events leading to the establishment of a two-year commuter college at Eunice, with ground-breaking ceremonies in May 1966.

Institutional Mission

The basic mission of Louisiana State University and Agricultural and Mechanical College was established by the Louisiana State Legislature in Revised Statute 17-1442:

The University is established and maintained to serve the needs of the people of the state. It shall seek to expand the areas of knowledge and understanding through scientific and speculative inquiry and in various ways shall encourage and assist the people of the state to fuller development of their resources. With these ends in view, an adequate program of studies shall be provided in the liberal arts and sciences, in the important vocational and professional subjects including agriculture, business and commerce, education, engineering, law, medicine, and military science and tactics; and additional courses may be provided in such other subjects as shall appear to be worthy of inclusion in the program of the University. Libraries and laboratories adequate for important and effective research and investigation shall be provided and maintained.

Though the primary purpose of the University is to provide and maintain the highest type of instruction in the various important branches of knowledge for graduates of the high school course of study, it shall also

offer such opportunities for instruction as may be practicable to persons in the state who are not in residence on any of its campuses.

The purpose of Louisiana State University at Eunice is to serve the needs of its constituency in keeping with the mission of the overall Louisiana State University System. Specifically, LSUE seeks to provide programs and services normally associated with a comprehensive community college. Accordingly, the role, scope, and mission statement for LSU at Eunice, as promulgated in the “LSU at Eunice Strategic Plan: Blueprint for the Future” and approved by the LSU Board of Supervisors is as follows:

Louisiana State University at Eunice, a member of the Louisiana State University System, is a comprehensive, open admissions institution of higher education. The University is dedicated to high quality, low-cost education and is committed to academic excellence and the dignity and worth of the individual. To this end, Louisiana State University at Eunice offers associate degrees, certificates and continuing education programs as well as transfer curricula. Its curricula span the liberal arts, sciences, business and technology, pre-professional and professional areas for the benefit of a diverse population. All who can benefit from its resources deserve the opportunity to pursue the goal of lifelong learning and to expand their knowledge and skills at LSUE.

In fulfillment of this mission, Louisiana State University at Eunice strives to achieve the following:

- Encourage traditional and nontraditional populations to take advantage of educational opportunities.
- Create a learning environment which facilitates the integration of knowledge and the development of the whole person.
- Provide a general education which requires all students to master the skills and competencies necessary for lifelong learning.
- Provide programs which parallel four-year college and university courses, including special honors courses, which are directly transferable.
- Prepare students to meet employment opportunities as determined by regional needs.
- Prepare programs of developmental studies which will upgrade student skills to the levels necessary for successful college experience.
- Provide the necessary support services to help students realize their maximum potential.
- Create and offer programs of Continuing/Adult Education and community service which respond to the needs of the area.

LSUE will continue to serve the educational and cultural needs of its service area by offering necessary certificate and associate degree programs. Since high quality technical programs are crucial to economic development, the institution will continue to expand its relationship with local business and industry to identify area workforce needs. The institution will also work closely with four-year colleges in the area to further increase matriculation opportunities for its students. Public service activities will be undertaken to meet the needs of the service area and to raise the level of education and improve the quality of life for area citizens.

Philosophy

Louisiana State University at Eunice is committed to the principle that individuals should have the opportunity to develop themselves through education commensurate with their capabilities and interests. To this end, the University strives to provide educational programs and related services which reflect and respond to the diversified interests, aptitudes, talents, needs, and goals of its constituency.

Goals

Consistent with its mission, Louisiana State University at Eunice works to achieve the following goals:

1. Students complete associate degree or certificate programs prepared to enter the work force.
2. Students complete the first two or more years of baccalaureate study prepared to transfer to four-year institutions to complete their degrees.
3. Students fulfill general education and continuing education needs through a variety of educational offerings at various teaching sites and times.

4. Students who need developmental instruction acquire the knowledge and skills to prepare them for collegiate study.
5. Students receive support and assistance in reaching academic, personal, career, and employment goals.
6. Students participate in extracurricular activities to meet personal, artistic, or intellectual interests.
7. Students find facilities and resources adequate in classrooms, laboratories, the library, and recreational areas.
8. Citizens of LSUE's service area find educational opportunities to meet changing employment needs.
9. Citizens experience cultural enrichment and personal development through participating in programs offered as a community service.

In pursuing these goals, Louisiana State University at Eunice is committed to maintaining the highest academic and professional standards in all of its educational and related programs and services. To this end, the University will endeavor to recruit the best qualified personnel available for its various programs and will encourage the professional growth of administrators, faculty, and staff as a continuous process.

Institutional Overview

Academic Offerings

Louisiana State University at Eunice offers a wide range of courses and programs for the student wishing to pursue a four-year degree as well as for the student wishing to prepare for a career in two years or less of study. Louisiana State University at Eunice is accredited by the Commission on Colleges of the Southern Association of Colleges and Schools to award associate degrees.

Students pursuing a four-year degree can ordinarily complete at least the first two years of their program at LSUE. Courses taken by these students are usually the same in number, title, credit, and content as those offered on the Baton Rouge campus. Students pursuing the baccalaureate degree may major in such areas as business administration, education, humanities, social sciences, agriculture, engineering, natural sciences, and pre-professional preparation.

For students seeking career preparation in only two years, LSU at Eunice offers associate degree programs in computer information technology, criminal justice, early childhood education, fire science, general studies, management, nursing, office administration, paralegal studies, public and industrial security, radiologic technology, and respiratory care. Although most of these programs are designed primarily to prepare students for immediate employment, credits earned in them are usually acceptable for transfer if the student later decides to work toward a four-year degree.

Developmental Studies Program

The Developmental Studies Program coordinates courses and support services designed to prepare students for college-level studies. The program consists of writing skills (English 0001), quantitative skills (Mathematics 0001, 0002, 0007), reading skills (Developmental Studies 0008), and academic and personal skills (Developmental Studies 0004).

Students are placed in the courses according to their levels of proficiency in each academic area and may take one or more such courses. In addition, the Developmental Studies Program includes tutoring, counseling, and academic advisement services. Through these various components, the Developmental Studies Program helps students gain the preparation they need to achieve their educational goals in college.

my.LSUE

The my.LSUE system provides students with anytime-anywhere access to key university information and services. The system can be accessed via any Internet-connected computer or via many custom kiosks located throughout the campus. Using my.LSUE, you can:

- send and receive electronic mail

- access library databases and indexes
- access and verify demographic and program information including your address, telephone, advisor, major, academic status, and other information
- view your current semester schedule with mid-term and final grades when posted
- check for any outstanding “holds” that may prevent you from registering for classes
- estimate your grade-point average based on the grades you expect to earn in the current semester and view the impact on your overall GPA
- view your academic transcript on-line
- view and print a fee bill showing your tuition and fees
- register for classes on-line, including the ability to drop and add courses
- change your Personal Identification Number (PIN number) used to access my.LSUE
- view and interact with on-line course areas which are created for each course section taught at the University
- access instructor-posted materials including lecture notes, syllabi, and interactive discussion areas

my.LSUE account information is mailed to new students as they apply for admission.

Electronic mail accounts do not become active until students have registered for classes and paid fees. Current students may pick up their Login and PIN information at any time from the Office of Information Technology located in Manual Hall, Room 105.

Undergraduate Research Summer Institute

With support from the LSUE Foundation, the Undergraduate Research Summer Institute (URSI) provides an opportunity for LSUE faculty/student teams to carry out investigational activities which will enrich the experience for the talented undergraduate, while also providing LSUE faculty with a professional development opportunity on a discipline-specific topic of interest to them.

Career Services

The LSUE Career Services Center, located in Room 102 of the Acadian Center, provides assistance to students in the following areas:

- Career Decision Making—assists students in making wise career choices.
- Career Exploration—assists students in exploring job opportunities.
- Job Search Skills—assists students in sharpening job search skills.
- Job Placement—assists students in finding full-time or part-time employment.

Career Services will provide activities and programs such as individual self-assessments through career testing and counseling, career days, job fairs, on-campus interviews, and various career workshops/seminars. These activities and programs are designed to help prepare students for job opportunities after completing their vocational degree program. Career Services also provides additional programs that offer opportunities for students to work in areas related to their career choices, such as internships, cooperative education, and work-study.

Course Articulation Agreements with Louisiana Technical College Campuses

Louisiana State University at Eunice has course articulation agreements with four technical college campuses in the Louisiana Community and Technical College System (LCTCS). These agreements identify specific courses that will transfer between the four technical college campuses and LSUE. For more information on these transfer agreements, contact the LSUE Division of Business and Technology.

Campus Facilities

The campus at Louisiana State University at Eunice consists of a 196-acre tract of land, which extends along Louisiana Highway 755 southwest from downtown Eunice.

LIBRARY

The Arnold LeDoux Library provides a variety of informational resources for use by students, faculty, and the community. Those resources include a book collection of more than 100,000 volumes, periodicals, and audio-visual materials varied in coverage and format. There are also specialized collections in genealogy and Louisiana

documents. Developed to meet the needs of academic programs offered at LSUE, the collection covers many fields of interest.

The Library is also a depository for both state and federal documents. Louisiana documents are included in a special Louisiana collection housed on the first floor.

The book, periodical, and database resources of the LeDoux Library can be readily accessed through the Library's online catalog and information management system. In addition, users can access the online catalogs of other academic institutions in Louisiana as well as web-based resources and a large collection of databases. New library users are provided assistance and instruction in how to use the library and its resources.

Photocopiers, microfiche readers and printers, and personal computers are provided for the students' convenience.

SCIENCE BUILDING

The administrative offices of the Chancellor and the Vice Chancellor for Business Affairs are housed in the Science Building. This building has specially designed rooms equipped for lectures, demonstrations, and laboratory work in the physical and biological sciences. In addition to regular classrooms and faculty and staff offices, the building contains a large amphitheater-classroom and several research laboratories for use by both faculty and students.

GLADNEY L. MANUEL, SR. HALL

Gladney L. Manuel, Sr. Hall houses the Office of Academic Affairs, the Registrar's Office, the Office of Information Technology, the Office of Admissions, the Division of Business and Technology, and the Division of Liberal Arts. Among the educational facilities available in this building are a distance learning laboratory, computer laboratories, complete ceramics and design studios for art, and a tiered lecture auditorium.

HEALTH TECHNOLOGY BUILDING

The Health Technology Building, which opened in fall 1997, houses programs in nursing, radiologic technology, respiratory care, and diagnostic medical sonography. The 43,700-square-foot facility includes the Office of the Division of Nursing and Allied Health, classrooms, health care laboratories, a 250 seat auditorium with satellite TV connections, a distance learning laboratory, a computer laboratory, and an audiovisual laboratory.

ACADIAN CENTER

Fall 1971 marked the opening of the Acadian Center, which was expanded in 2002, almost doubling in size to more than 45,000 square feet. Although planned for multipurpose use, its versatility does not hamper the beauty of the building, the name of which reflects the rich Acadian heritage of the tri-parish area. Practicality and comfort are skillfully blended in the Acadian Center, which was designed to serve the students, faculty, and staff of LSUE.

Members of the LSUE community may enjoy fireside chats in the comfortable lounge area, obtain food service ranging from snacks to full meals, participate in the activities of the games area, or spend time between classes enjoying one of the prime advantages of a small college, the friendly atmosphere founded on familiar faces and a wide circle of acquaintances. The center features a veranda where students can gather outside between classes.

The Acadian Center also houses the Office of Student Affairs, the Book Store, the Office of Financial Aid, Campus Security, and the Student Government Association office. Banquet service for smaller groups is available in a special meeting room, while the main dining area, which normally seats approximately 400 people, may be used to accommodate up to 500 people at larger banquets. A conference area accommodates 300 people, either as one large room or subdivided into three rooms holding 100 people each.

HEALTH AND PHYSICAL EDUCATION BUILDING

Included in the Health and Physical Education Building are a gymnasium with a standard-size basketball court plus cross-courts; a heated swimming pool; an indoor archery range that can also be used for golf driving; an inlaid putting surface; and a weight training and conditioning room. Besides basketball, the court area is designed for such activities as indoor tennis, badminton, volleyball, and gymnastics. The facilities are used for instruction but are also available at scheduled times for recreational use by students and faculty.

The BAPTIST COLLEGIATE MINISTRY opened in the 1976 spring semester. Its major purpose is the spiritual enrichment of students. This is accomplished through Bible studies, inspirational speakers, and a variety of special events with spiritual growth as their aim. The BCM also offers a place for students to play ping pong, listen to music, find a quiet corner in which to study, or just talk with friends between classes. The building has a comfortable recreation-conference area complete with fireplace, kitchen facilities, a director's office, and a television room. Sponsored jointly by the Louisiana Baptist Convention and the Acadia Baptist Association, the BCM invites students of all faiths to share in its programs.

The CATHOLIC STUDENT CENTER, which opened in the fall of 1979, has a chapel and commons area, kitchen facilities, and quarters for the resident. The center is open Monday through Friday from 7:30 a.m. to 5 p.m. The center houses a variety of student activities, retreats, and study programs in scripture and theology. Mass is celebrated at noon Wednesdays, followed by a free lunch.

BENGAL VILLAGE is a privatized student apartment complex that offers on-campus housing for LSUE students. Students who live in Bengal Village are members of a community, with an opportunity to participate in a variety of activities, to relax in the clubhouse, or to study together with other students. Additional information is provided below in the section on "Housing."

Campus Publications

In addition to this catalog, Louisiana State University at Eunice publishes a Faculty Handbook, a Student Handbook, and various LSUE brochures. Both students and faculty assist in the editing of a campus newspaper, *The Bayou Bengal*.

University Services

Since Louisiana State University at Eunice is an integral part of the surrounding community, many cooperative programs have been developed, and faculty and staff members are available as speakers for area schools, clubs, and organizations. The University sponsors various cultural, civic, and informational programs such as visiting lecturers, artists and concert series, faculty lectures, and occasional book and art exhibits. Whenever possible, the public is invited to share in the educational, informational, and cultural activities of the campus.

LSUE DISTRICT RALLY ASSOCIATION

Louisiana State University at Eunice serves as the host and testing center for literary, speech, and drama rallies held each spring for high school students in a nine-parish area. LSUE presents scholarships to the highest scoring student in each of the forty-six literary categories and three speech categories.

FOREIGN LANGUAGE FESTIVAL

Louisiana State University at Eunice is also the site of an annual festival sponsored by the Tri-Parish Foreign Language Teachers' Council. Participating high school students are given the opportunity to compete in several declamation categories. Certificates are awarded to the winners of the festival.

Housing

With the opening of Bengal Village in fall 2002, LSUE students now have an opportunity to live on campus in an apartment complex that is also a student community. Not only do students enjoy the convenience and comfort of living in modern, furnished apartments right on campus; they also are part of a student community with a chance to participate in a variety of social, educational, and recreational activities. The complex includes a swimming pool, outdoor barbecue pavilion, sports court, clubhouse with a big screen television, individual and group study spaces, and laundry facilities.

Bengal Village has on-site management staff, plus resident assistants who help to make sure that everything is going smoothly and who coordinate community activities. In all apartment units, each student has his or her own private bedroom. All apartments include kitchens and living areas. The complex is gated, and parking is separate from other parking areas on campus. The apartments are managed by a private company that specializes in student housing. Persons leasing apartments must be current LSUE students or must have been accepted for admission as a new student.

For more information, phone (337) 550-7800; e-mail bengalvillage@hotmail.com; on the Internet, go to: www.campushousing.com/lssue; or write Bengal Village, 225 LSUE Campus Drive, Eunice, LA 70535.

Traffic Regulations

All students must register motor vehicles for permits to park and operate them on campus. Students are held responsible for knowing and obeying campus traffic regulations. Copies of the regulations are available in the Office of Student Affairs.

Drug-Free Campus Policy

It is the policy of LSU at Eunice to maintain a drug-free campus environment. Both the workforce and students shall remain drug-free and free of other substance abuse. The illegal use, possession, dispensation, manufacture, or sale of controlled substances and alcohol abuse by students while on campus is prohibited. Students who are convicted of violating the policy will be subject to disciplinary action within 30 days, including suspension or expulsion from the University. Anyone found to have violated the policy is also subject to referral to civil authorities as appropriate. The University will assist employees and students seeking rehabilitation by providing names, addresses, and telephone numbers of substance abuse facilities. Alcohol and drug awareness programs will also be presented. For the complete policy, including provisions affecting all employees, inquire in the Office of Student Affairs.

Public Safety

LSUE is dedicated to preserving a peaceful and safe campus environment. Students, faculty, staff, and visitors are to report all crimes or suspicious activity to the Campus Security Office, the Vice Chancellor for Student Affairs, or any other administrative office.

The Campus Security Office is located in the Acadian Center, Room A-101. In order to report a fire, accident, or emergency using a phone in any campus office, dial 9-911 (for assistance from off campus agencies) and then report the emergency on campus by calling ext. 225 or 218 or by contacting any administrative office. After regular business hours, emergencies should be reported on campus by dialing 225 (if no answer, dial 580-0720).

Guards assigned to patrol areas throughout the campus will respond promptly to any call and are in direct radio contact with the municipal fire department, emergency medical services, and police officials. Campus Security consists of five full-time guards. Qualifications of guards meet the provisions of Louisiana law.

Campus Security provides a limited range of services, including accident investigations, emergency services, and crime prevention services. Administrative responsibility for security service for the campus rests with the office of the Vice Chancellor for Student Affairs.

Campus Security has jurisdiction on all University facilities, premises, and property. Campus Security reports the number and types of crimes monthly to the LSU Board of Supervisors. These figures are published annually, as a matter of public record, and may be obtained from the Campus Security Office or the Vice Chancellor for Student Affairs.

The LSUE Board of Advisors

The LSUE Board of Advisors, established in 1993, is a group of up to 75 community and business leaders from the LSUE service region organized for the following purpose: 1. to serve as an avenue of communication between the campus and its regional service area; 2. to assist the campus in strengthening existing services and identifying new services to the benefit of the region; 3. to assist in identifying and soliciting appropriate support from the broad and varied constituencies which are important to the continuing development of the campus; 4. to cultivate good will, mutual support, and common understanding between the campus and a variety of external groups and individuals, particularly government agencies; 5. to facilitate campus efforts to develop as an institution which meets the needs of all citizens of its regional service area; and, 6. to foster and enhance the understanding among appropriate individuals and groups of the importance of the campus to the region.

The Board, as a whole, meets once a year. Much of the Board's work is done through its five standing committees: Alumni Liaison, Public Relations, Foundation Liaison, Legislative and Governmental Relations, and Program Development. Members serve five-year, renewable terms and are not compensated for their service.

The LSUE Foundation

The Louisiana State University at Eunice Foundation is a non-profit, tax exempt organization formed in 1992 to support programs and activities designed to advance and promote LSUE. The foundation accepts contributions from individuals, business and industry, professional groups, and philanthropic organizations.

The LSUE Foundation was established in recognition that state support does not provide all the necessary resources to fund quality educational programs at public higher education institutions. The foundation seeks funding so that it may provide the margin of excellence for the educational and other programs of the institution.

Funds raised by the foundation are used to enhance the services and operations of the campus to include general institutional development, community relations, faculty support, student support, and other activities.

Contributions to the LSUE Foundation are tax deductible. Contributors may designate that their donation be used for student scholarships, institutional development, or general foundation support. The foundation publishes an annual report detailing receipts, expenditures, and activities. Additional information regarding the LSUE Foundation is available by contacting the foundation office at (337) 550-1257.

Friends of the Library

The Friends of the Library, a subdivision of the LSUE Foundation, is a support group of individuals from throughout the campus and the communities of LSUE's service area. Their support is offered in many ways: volunteer staffing for events such as exhibits or book sales, loan of displays or equipment, and financial support to extend the resources and services of the Library beyond the limits of its state budget allocation. Memberships range from \$10 for contributing members to \$500 for lifetime members. Further information is available from the Office of the Library Director at (337) 550-1380.

Office of Alumni Affairs

The Office of Alumni Affairs is compiling a listing of all former LSUE students so that they can be notified of alumni activities and developments on campus. Alumni who want to update their address information can contact the Office of Alumni Affairs toll free inside Louisiana, 1-888-FOR-LSUE, ext. 257, or locally, 337-550-1257.

Continuing Education

LSU at Eunice offers a variety of both credit and non-credit continuing education programs. Credit evening classes designed to meet the continuing education needs of students and community members are scheduled each semester on the LSUE campus and at off-campus locations. In addition, LSUE sponsors non-credit short courses and workshops as well as a summer enrichment program for children. Details are available from the Office of Continuing Education.

Distance Learning

Manuel Hall and the Health Technology Building house distance learning laboratories connected with other university campuses in Louisiana through fully interactive compressed video technology. Classes can originate at any campus and be attended by students on any other campus. Students can communicate with one another and with the instructor using two-way audio and video. The distance learning laboratory enhances the educational opportunities available to LSUE students and all other Louisiana students. In addition to sending and receiving freshman and sophomore courses, LSUE also receives upper-level undergraduate and graduate courses from other universities in such fields as education, library science, horticulture, and other topics. For more information, contact the Office of Continuing Education.

INSTITUTIONAL AND PROFESSIONAL ACCREDITATION

INSTITUTIONAL ACCREDITATION

Louisiana State University at Eunice is a member of the Southern Association of Colleges and Schools. Founded in 1895, the association is voluntary, nonprofit, and nongovernmental. Membership is open to public and private educational institutions in eleven southern states and Latin America.

LSUE is accredited by the Commission on Colleges of the Southern Association of Colleges and Schools to award associate degrees. Reaffirmation received December 2004.

PROFESSIONAL ACCREDITATION

Division of Business and Technology – ISO 9002

Division of Nursing and Allied Health

- Associate Degree in Nursing – National League of Nursing
- Associate Degree in Radiologic Technology – Joint Review Committee on Education in Radiologic Technology
- Associate Degree in Respiratory Care – Joint Review Committee for Respiratory Therapy Education

ADMINISTRATION OF THE UNIVERSITY

Board of Supervisors

This list reflects Board membership and their term expiration at the time of publication. Note: The terms of some of the members of the LSU Board of Supervisors have expired. They continue to serve in this capacity until they have either been re-appointed or replaced.



Mr. C. Stewart Slack (Chairman)

P. O. Box 1450
Shreveport, LA 71164-1450
(318) 425-3030
sslack@lsu.edu

Mr. Slack represents the 4th Congressional District, and his term of service ends on June 1, 2006. He is an architect.



Mr. Bernard E. Boudreaux, Jr. (Vice-Chairman)

P. O. Box 3197
Baton Rouge, LA 70821
(225) 387-4000
bboudreaux@lsu.edu

Mr. Boudreaux is the At-large member of the Board, and his term of service ends on June 1, 2008. He is an attorney.



Mr. Kent Anderson

1500 N. 18th Street
Monroe, LA 71201
(318) 362-8201
kanderson@lsu.edu

Mr. Anderson represents the 5th Congressional District, and his term of service ends on June 1, 2008. He is retired and serves on a bank advisory board.



Mr. Ronald R. Anderson

P. O. Box 25
Ethel, LA 70730
(225) 922-6203
randerson@lsu.edu

Mr. Anderson represents the 6th Congressional District, and his term of service ends on June 1, 2006. He is a farmer and president of the Louisiana Farm Bureau Federation.



Dr. Jack A. Andonie
 1204 Transcontinental Drive
 Metairie, LA 70001
 (504) 780-6454
jandonie@lsu.edu

Dr. Andonie represents the 1st Congressional District, and his term of service ends on June 1, 2006. He is a physician.



Mr. Marty J. Chabert
 P.O. Box 518
 Chauvin, LA 70344
 (985) 594-3358
charbert@lsu.edu

Mr. Chabert represents the 3rd Congressional District, and his term of service ends on June 1, 2006. He operates a real estate and investment company.



Mr. Charles V. Cusimano
 P. O. Box 8362
 Metairie, LA 70011-8362
 (504) 833-0970
ccusimano@lsu.edu

Mr. Cusimano represents the 1st Congressional District, and his term of service ends on June 1, 2006. He is retired from the oil and gas exploration business.



Mr. Brad Golson
 P.O. Box 25090
 Baton Rouge, LA 70817
 (225) 578-8727
bgolson@lsu.edu

Mr. Golson is the student member of the Board, and his term of service ends on May 31, 2005. He is the president of the SGA at Louisiana State University.



Mr. Francis M. "Hank" Gowen, Jr.
 P.O. Box 18561
 Shreveport, LA 71138
 (318) 865-5911
hgowen@lsu.edu

Mr. Gowen represents the 4th Congressional District, and his term of service ends June 1, 2010. He is an attorney.



Mr. Louis J. Lambert
 37110 St. Andrews Fairway
 Prairieville, LA 70769
 (225) 673-6820
llambert@lsu.edu

Mr. Lambert represents the 6th Congressional District, and his term of service ends on June 1, 2008. He is an attorney.



Mrs. Laura A. Leach
 P. O. Box 997
 Lake Charles, LA 70602
 (337) 439-5508
lleach@lsu.edu

Mrs. Leach represents the 7th Congressional District, and her term of service ends on June 1, 2006. She is the secretary/treasurer of an oil and gas exploration company.



Mr. Roger H. Ogden
 460 Broadway Street
 New Orleans, LA 70118
 (504) 866-9757
rogden@lsu.edu

Mr. Ogden represents the 2nd Congressional District, and his term of service ends on June 1, 2004. He is an attorney and is president of a real estate development company.



Mr. William W. "Billy" Rucks, IV
 P.O. Box 51967
 Lafayette, LA 70505
 (337) 232-8460
wrucks@lsu.edu

Mr. Rucks represents the 7th Congressional District, and his term of service ends on June 1, 2004. He is president of a venture capital and investment company.



Mr. Jerry E. Shea, Jr.
 3405 Old Spanish Trail East
 New Iberia, LA 70560
 (337) 369-3761
jshea@lsu.edu

Mr. Shea represents the 3rd Congressional District, and his term of service ends on June 1, 2010. He is president of an oil and gas pipe equipment company.



Mr. Charles S. Weems, III
 2001 MacArthur Dr.
 P. O. Box 6118
 Alexandria, LA 71307-6118
 (318) 445-6471
cweems@lsu.edu

Mr. Weems represents the 5th Congressional District, and his term of service ends on June 1, 2008. He is an attorney.



Mr. Rod West
 3700 Tulane Avenue
 L-TUL-111
 New Orleans, LA 70119
 (504) 595-3880
rwest@lsu.edu

Mr. West represents the 2nd Congressional District, and his term of service ends on June 1, 2006. He is an attorney.

Executives of the University System

William L. Jenkins, Ph.D., *President*

Dudley B. Fricke, M.S., *Special Assistant to the President*

Patrick Gibbs, M.B.A., *Vice-President for Property, Facilities, and Administration*

Robert H. Rasmussen, Ed.D., *Assistant Vice President for System Relations*

William L. Silvia, Jr., M.P.A., *Executive Vice-President for Administration and Finance*

Carolyn H. Hargrave, Ph.D., *Vice-President for Academic Affairs*

Executives of LSU at Eunice

William J. Nunez, III, Ph.D., *Chancellor*

John L. Couvillion, Ph.D., *Vice Chancellor for Student Affairs*

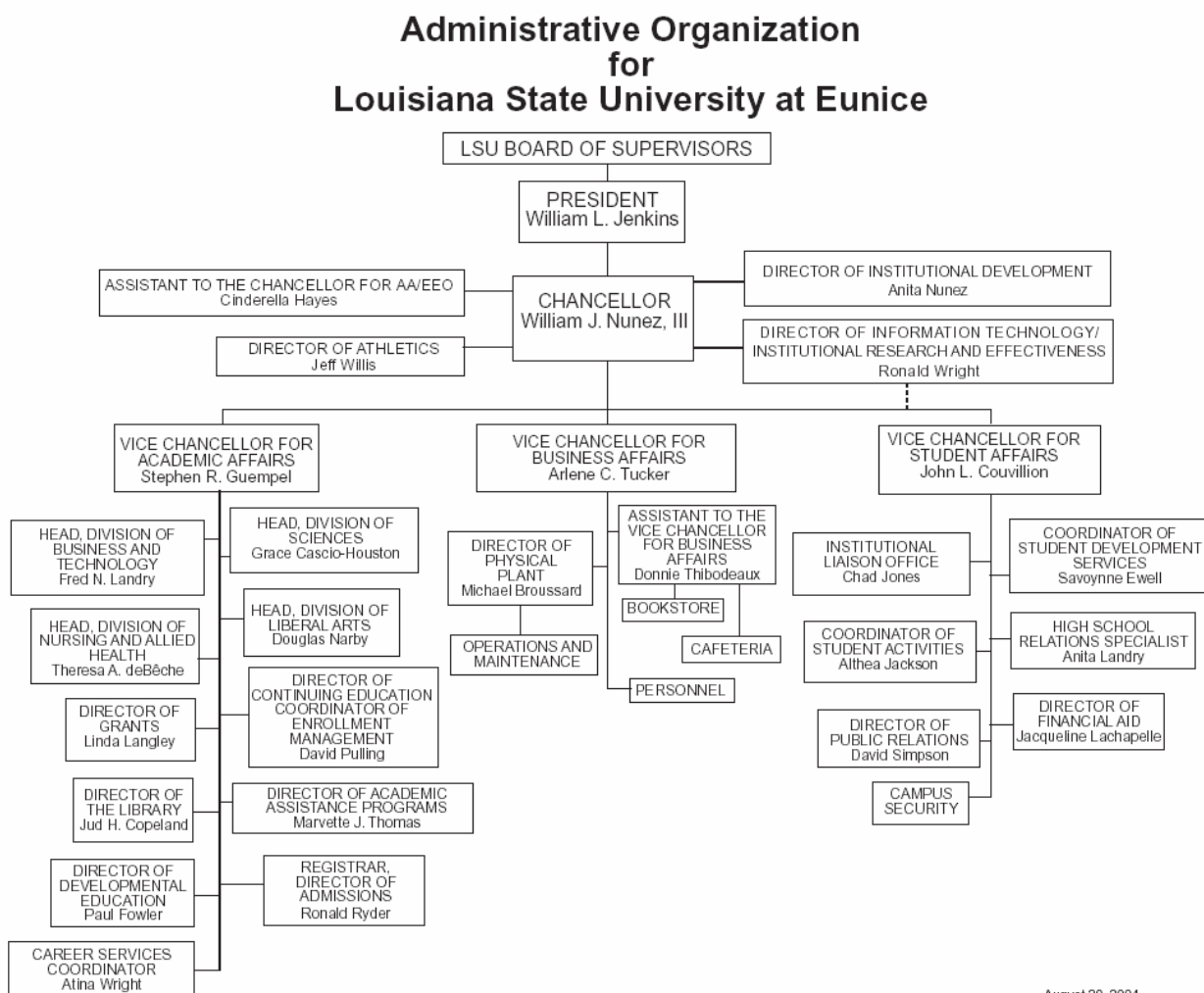
Stephen R. Guempel, Ph.D., *Vice Chancellor for Academic Affairs*

Arlene C. Tucker, M.B.A., *Vice Chancellor for Business Affairs*

LSUE Administrative Council

William J. Nunez, III, Ph.D., *Chancellor*
Michael Broussard, M.P.A., *Director of Physical Plant*
Grace Cascio-Houston, Ph.D., *Head, Division of Sciences*
Jud Copeland, Ph.D., *Director of the Library*
John L. Couvillion, Ph.D., *Vice Chancellor for Student Affairs*
Theresa A. deBêche, M.N., *Head, Division of Nursing and Allied Health*
Paul Fowler, Ph.D., *Director of Developmental Education*
Stephen R. Guempel, Ph.D., *Vice Chancellor for Academic Affairs*
Cinderella Hayes, M.L.I.S., *Special Assistant to the Chancellor for AA/EEO*
Jacqueline Lachapelle, B.S., *Director of Financial Aid*
Fred N. Landry, Ph.D., *Head, Division of Business and Technology*
Douglas Narby, Ph.D., *Head, Division of Liberal Arts*
Anita Nunez, B.G.S., *Director of the LSUE Foundation and Institutional Development*
David Pulling, M.A., *Director of Continuing Education*
Ron Ryder, M.A., *Registrar and Assistant to the Vice Chancellor for Academic Affairs*
David Simpson, Ph.D., *Director of Public Relations*
Marvette J. Thomas, Ed.D., *Director of Academic Assistance Programs*
Arlene C. Tucker, M.B.A., *Vice Chancellor for Business Affairs*
Ronald Wright, M.Ed., *Director of Information Technology,
Institutional Research and Effectiveness*
Faculty Senate Chair, *ex officio*
Staff Senate Chair, *ex officio*

ADMINISTRATION – ORGANIZATIONAL CHART



DEGREES

DEGREES OFFERED – Fall 2004

CERTIFICATE PROGRAMS

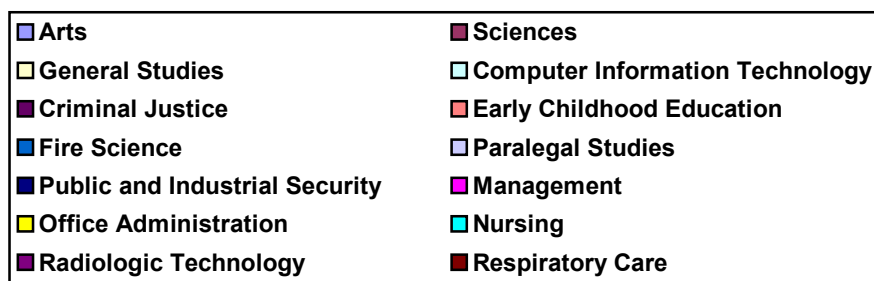
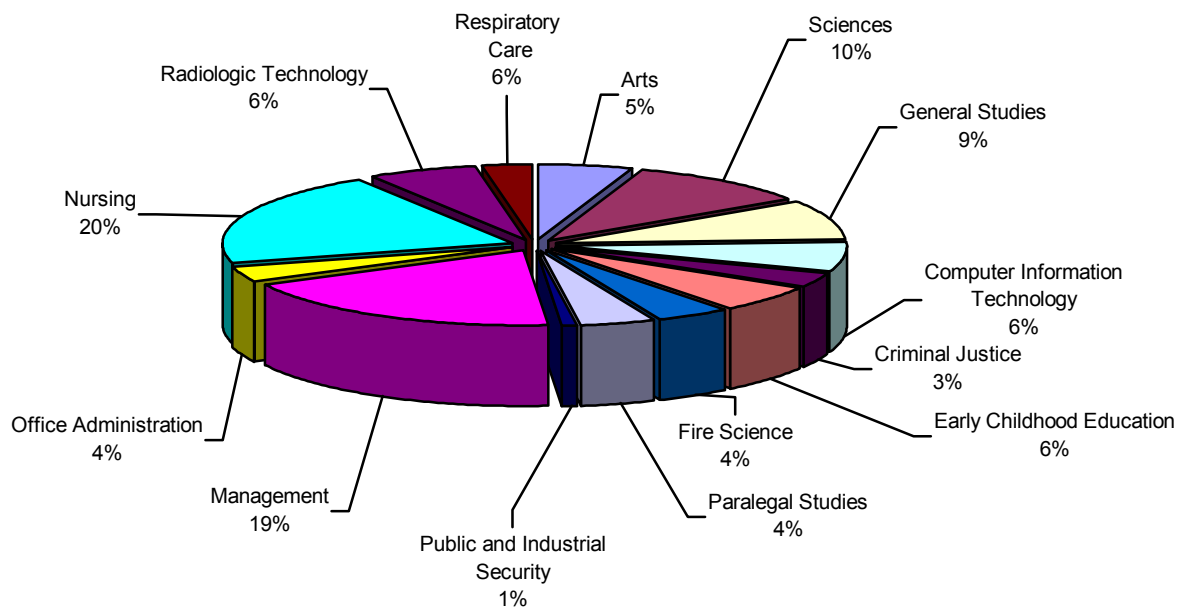
Arson Investigation
Fire Science
Office Practices and Procedures
Diagnostic Medical Sonography

ASSOCIATE DEGREE PROGRAMS

Arts
Science
General Studies
Computer Information Technology
Criminal Justice
Early Childhood Education
Fire Science
Paralegal Studies
Management
Office Administration
Nursing
Radiologic Technology
Respiratory Care

DEGREES

DEGREES AWARDED – 2003/2004

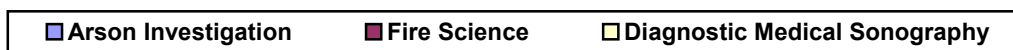


Arts	15	Paralegal Studies	12
Sciences	29	Public and Industrial Security	2
General Studies	24	Management	53
Computer Information Technology	18	Office Administration	10
Criminal Justice	9	Nursing	57
Early Childhood Education	16	Radiologic Technology	17
Fire Science	12	Respiratory Care	8

* Source: Louisiana Board of Regents Reporting System

DEGREES

CERTIFICATES AWARDED – 2003/2004



Arson Investigation	1
Fire Science	2
Diagnostic Medical Sonography	3

* Source: Louisiana Board of Regents Reporting System

DEGREES

ASSOCIATE DEGREES AWARDED: 1996-1997 / 2003-2004

Degree	03/04	02/03	01/02	00/01	99/00	98/99	97/98	96/97	Eight Year Total
Arts	15	12	14	23	17	7	14	7	109
Sciences	29	24	19	18	16	15	22	24	167
General Studies	24	21	26	15	21	19	17	20	163
Computer Information Technology	18	23	21	27	17	14	14	4	138
Criminal Justice	9	7	21	12	20	4	11	14	98
Early Childhood Education	16	14	0	0	0	0	0	0	30
Fire Science	12	24	15	15	21	27	31	15	160
Paralegal Studies	12	9	12	14	11	7	6	0	71
Public and Industrial Security	2	0	0	0	0	0	0	0	2
Management	53	40	44	31	22	28	25	17	260
Office Administration	10	27	44	33	38	39	37	31	259
Nursing	57	42	55	59	55	56	61	52	437
Radiologic Technology	17	21	19	18	24	20	39	15	173
Respiratory Care	8	16	14	13	15	14	10	6	96
Total	282	280	304	278	277	250	287	205	2163

CERTIFICATES AWARDED: 1996-1997 / 2003-2004

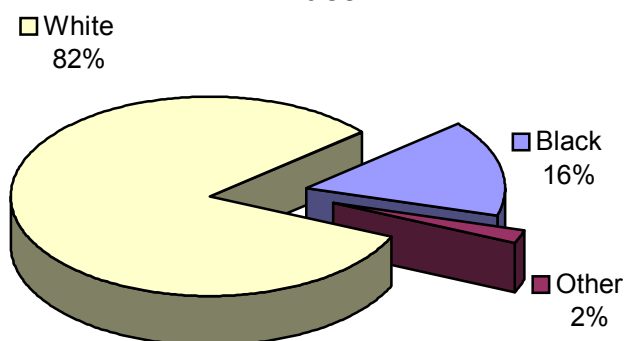
Degree	03/04	02/03	01/02	00/01	99/00	98/99	97/98	96/97	Eight Year Total
Arson Investigation	1	2	0	0	1	5	7	0	16
Fire Science	2	1	0	0	2	5	3	0	13
Office Practices and Procedures	0	2	3	5	1	4	1	3	19
Diagnostic Medical Sonography	3	0	0	0	0	0	0	0	3
Total	6	5	3	5	4	14	11	3	51

* Source: Louisiana Board of Regents Reporting System

DEGREES

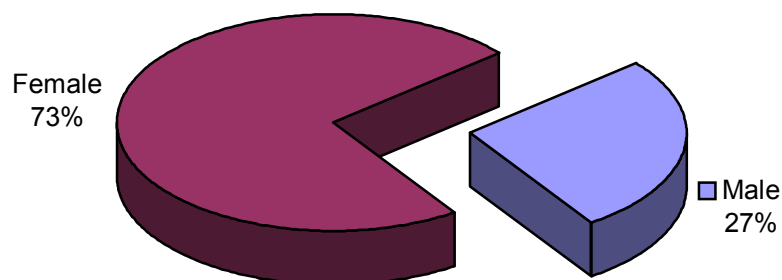
BREAKDOWN BY RACE AND GENDER 2003/2004

Associate Degrees Awarded by Race



Black	44
Other	6
White	232

Associate Degrees Awarded by Gender



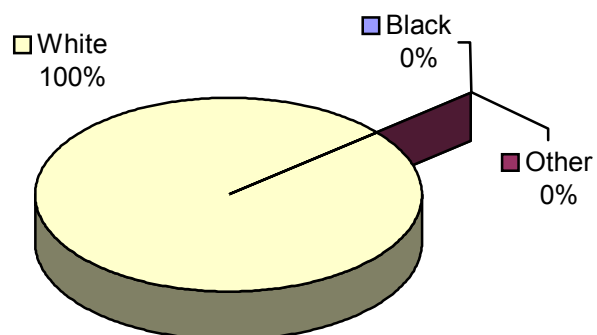
Male	75
Female	207

* Source: Louisiana Board of Regents Reporting System

DEGREES

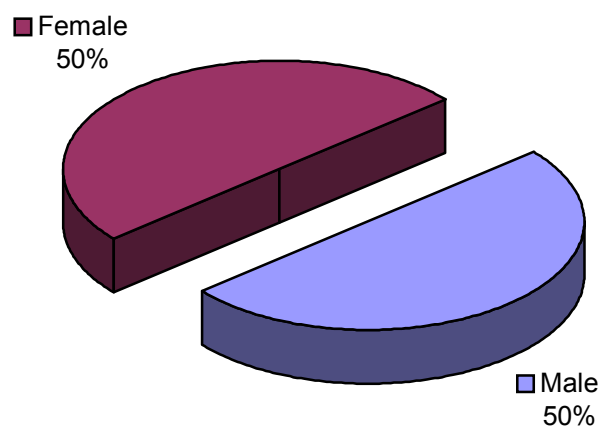
BREAKDOWN BY RACE AND GENDER 2003/2004

Certificates Awarded by Race



Black	0
Other	0
White	6

Certificates Awarded by Gender



Male	3
Female	3

* Source: Louisiana Board of Regents Reporting System

STUDENTS

ENROLLMENT SUMMARY – FALL 2004

	Males	Females	All Students
Age			
20 or less	503	945	1448
21-25	157	504	661
26-30	65	258	323
31-35	46	152	198
36-40	34	134	168
41 or over	47	226	273

Average Age - 25.10

Race

Black	141	610	751
White	685	1540	2225
Other	26	69	95

Reported ACT Scores

1-10	0	8	8
11-15	115	388	503
16-20	331	856	1187
21-25	184	372	556
26 and over	18	36	54

Average ACT Score - 18.34

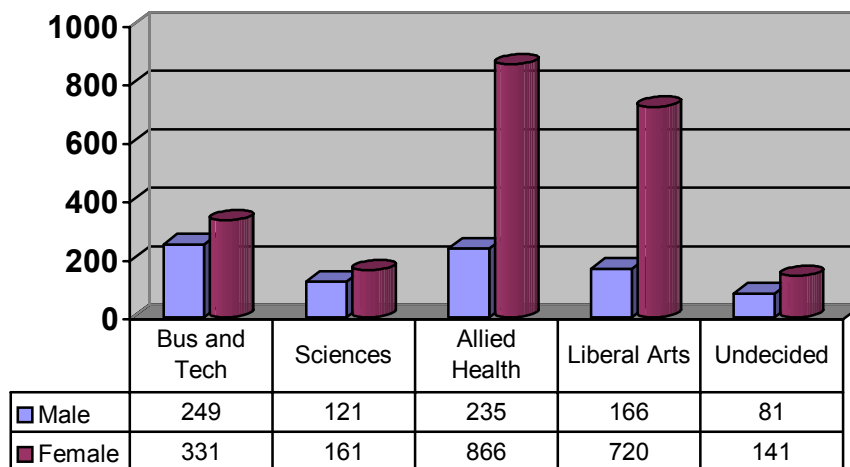
College Major

Business	249	331	580
Sciences	121	161	282
Allied Health	235	866	1101
Liberal Arts	166	720	886
Undecided	81	141	222

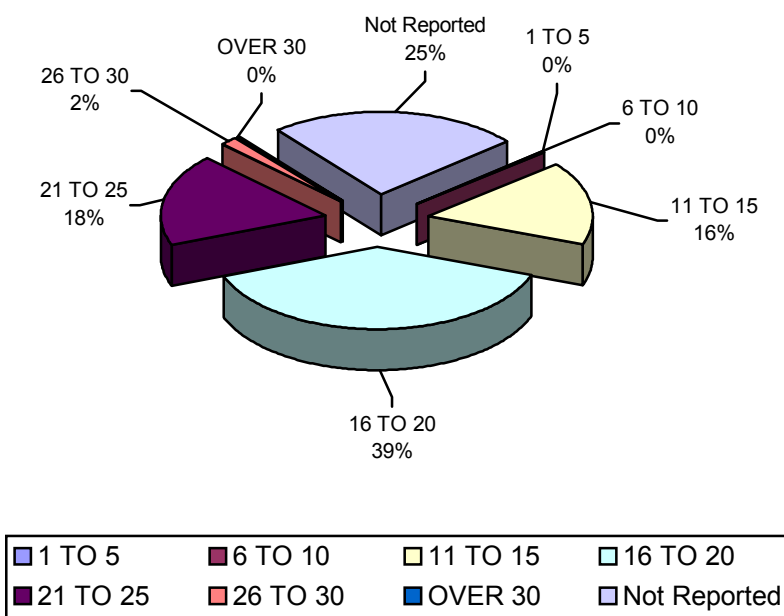
STUDENTS

ENROLLMENT – FALL 2004

BREAKDOWN BY DIVISION AND GENDER

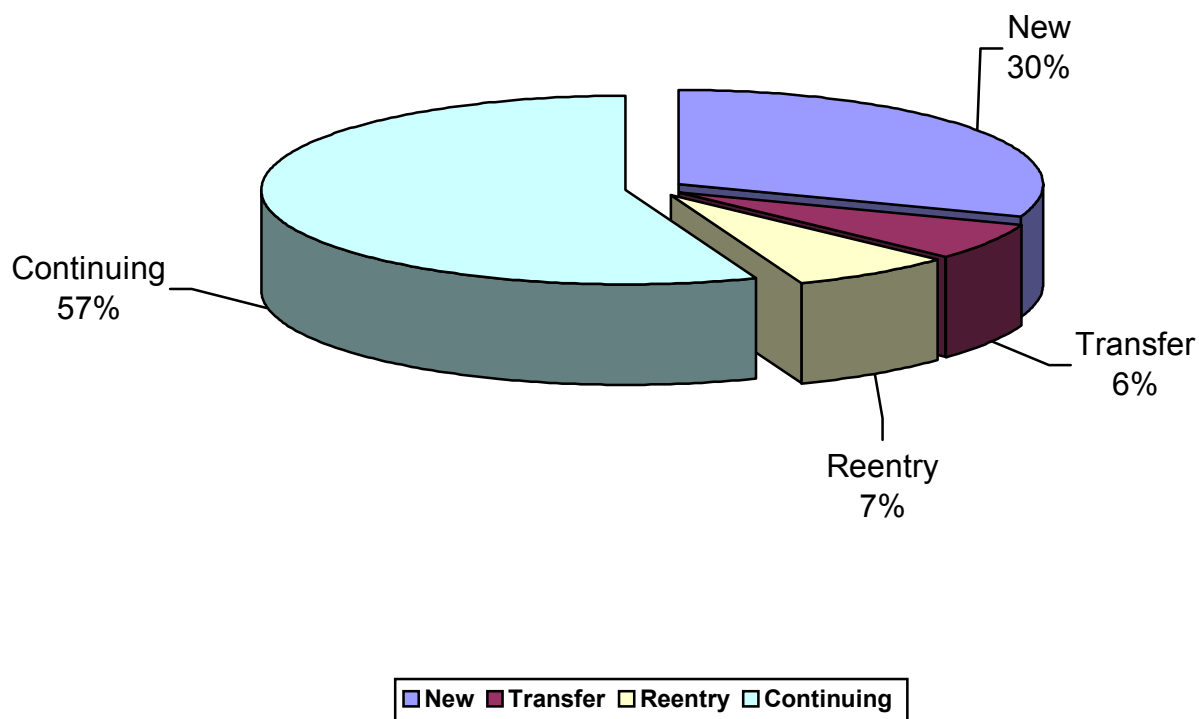


Enrollment Breakdown by ACT Score



STUDENTS

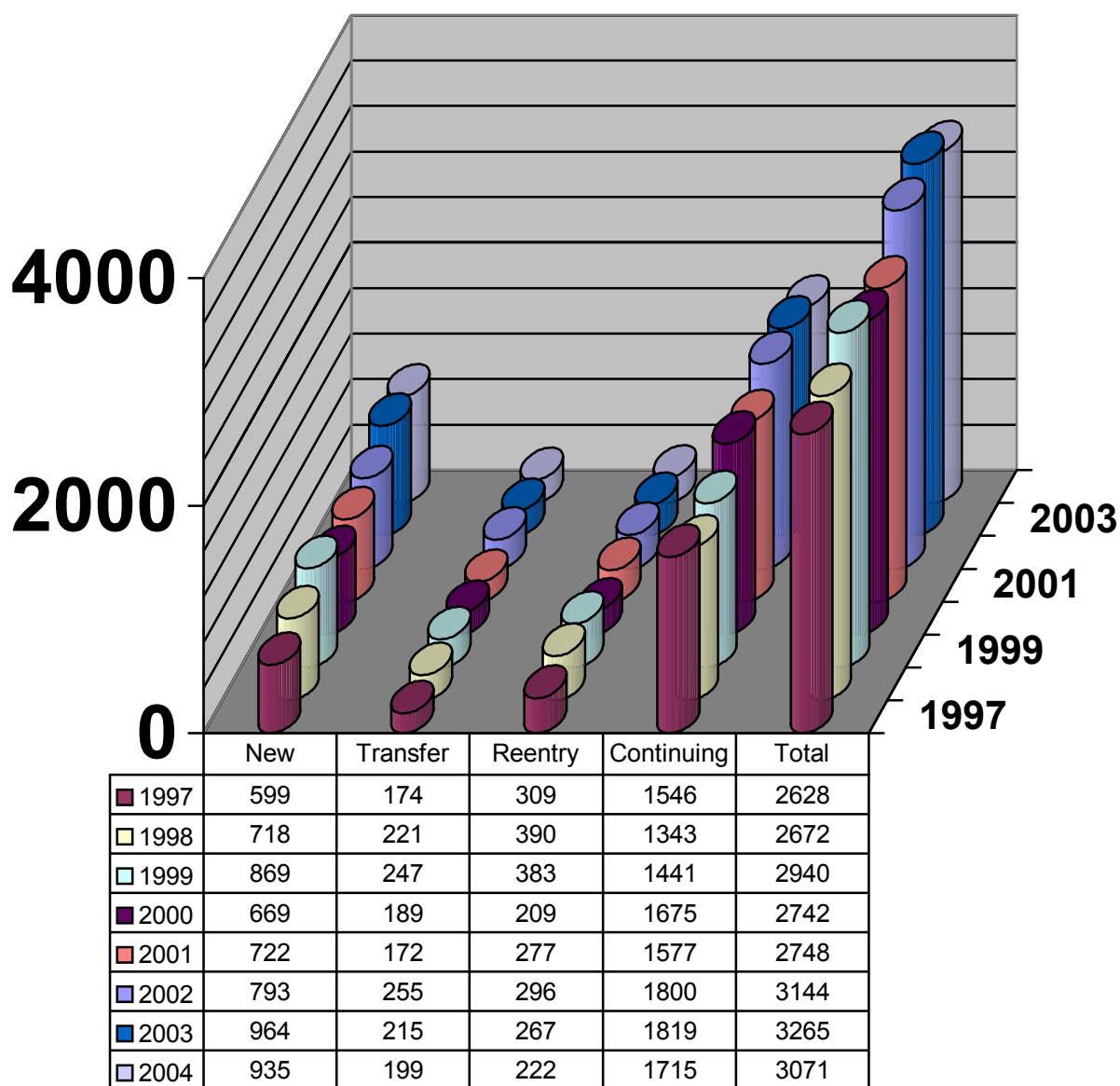
ENROLLMENT BY ENTRY STATUS – FALL 2004



New	935
Transfer	199
Reentry	222
Continuing	1715
TOTAL	3071

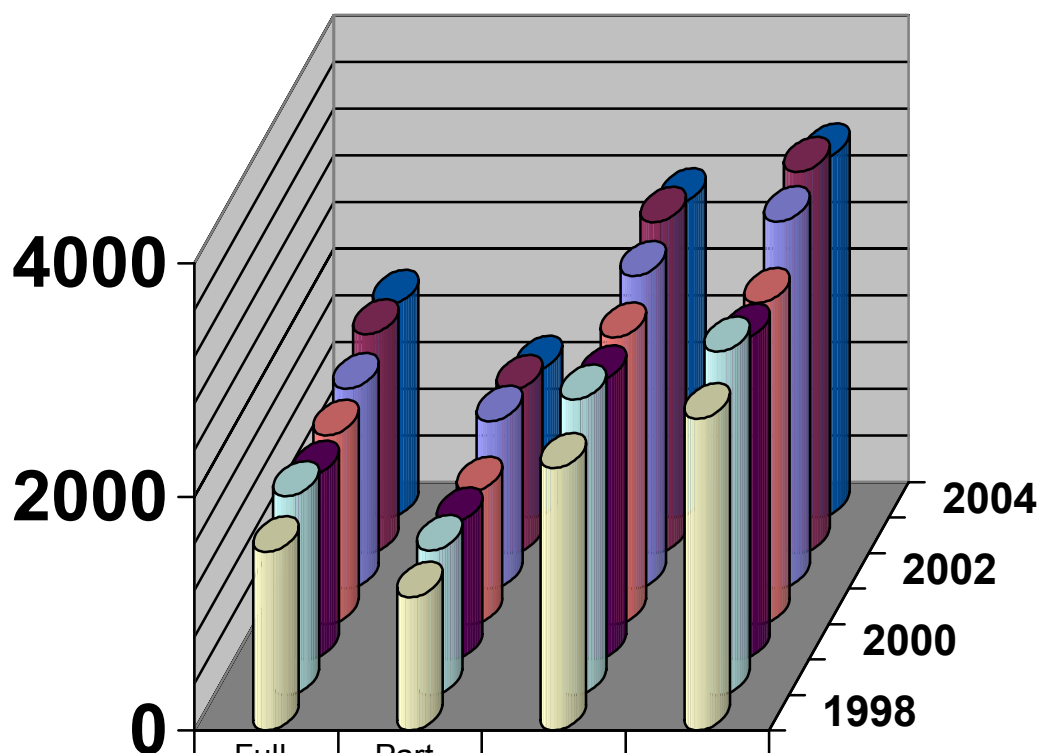
STUDENTS

BREAKDOWN BY ENROLLMENT STATUS 1997-2004



STUDENTS

ENROLLMENT BY FULL-TIME, PART-TIME, AND FTE 1998 - 2004



	Full-Time	Part-Time	FTE	Total
1998	1531	1141	2248	2672
1999	1702	1238	2528	2940
2000	1571	1171	2387	2742
2001	1616	1132	2451	2748
2002	1712	1432	2675	3144
2003	1871	1394	2833	3265
2004	1818	1253	2689	3071

STUDENTS

ENROLLMENT BY CURRICULUM, RACE, AND GENDER – FALL 2004

CERTIFICATE AND ASSOCIATE DEGREE PROGRAMS

Curriculum	Male				Female				Total			
	Black	White	Other	Total	Black	White	Other	Total	Black	White	Other	Total
Management	14	34	1	49	26	57	7	90	40	91	8	139
Office Admin	2	1	0	3	36	76	1	113	38	77	1	116
Computer Info Tech	16	32	0	48	14	14	0	28	30	46	0	76
Respiratory Care	1	16	2	19	18	50	1	69	19	66	3	88
PreNursing	13	69	3	85	179	270	16	465	192	339	19	550
Nursing	1	12	2	15	14	80	3	97	15	92	5	112
Radiologic Tech	14	89	2	105	33	168	3	204	47	257	5	309
General Studies	5	28	1	34	8	42	4	54	13	70	5	88
Criminal Justice	5	21	2	28	34	24	5	63	39	45	7	91
Paralegal Studies	1	3	0	4	12	43	1	56	13	46	1	60
Fire Science	11	77	3	91	1	7	0	8	12	84	3	99
Public and Ind. Sec.	0	1	0	1	0	3	0	3	0	4	0	4
Early Childhood Ed	1	1	0	2	65	69	1	135	66	70	1	137
Diag. Med. Sono.	0	0	0	0	1	3	0	4	1	3	0	4
TOTAL	84	384	16	484	441	906	42	1389	525	1290	58	1873

TRANSFER PROGRAMS

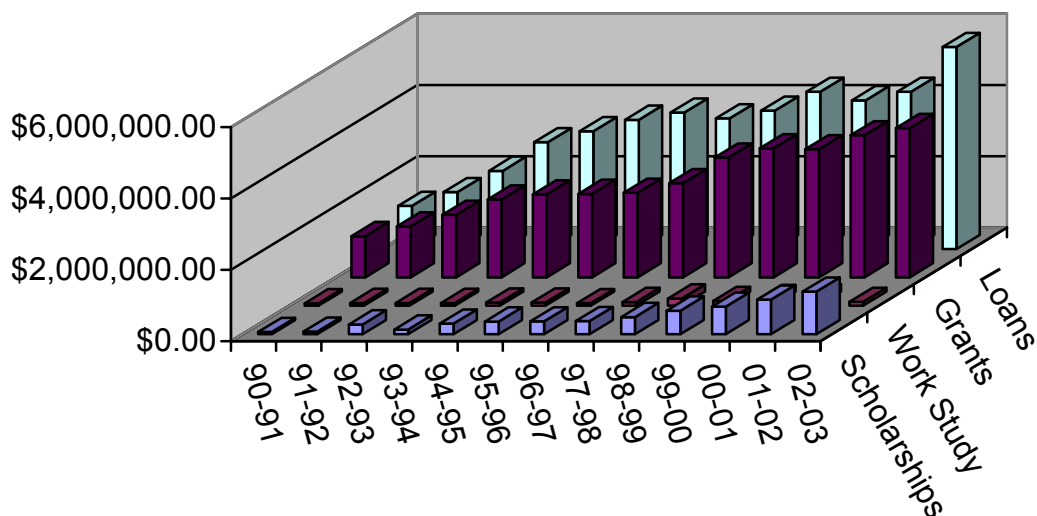
Curriculum	Male				Female				Total			
	Black	White	Other	Total	Black	White	Other	Total	Black	White	Other	Total
Business Admin	10	40	0	50	18	67	4	89	28	107	4	139
Education	12	50	0	62	62	233	7	302	74	283	7	364
Humanities/Soc Sci	6	26	4	36	19	84	6	109	25	110	10	145
Agriculture/Voc-ed	1	19	1	21	2	20	0	22	3	39	1	43
Engineering	6	22	0	28	2	4	0	6	8	26	0	34
Natural Sciences	2	19	0	21	4	25	0	29	6	44	0	50
Pre-Professional	9	57	3	69	35	94	3	132	44	151	6	201
TOTAL	46	233	8	287	142	527	20	689	188	760	28	976

UNDECIDED

Curriculum	Male				Female				Total			
	Black	White	Other	Total	Black	White	Other	Total	Black	White	Other	Total
TOTAL	11	68	2	81	27	107	7	141	38	175	9	222

STUDENTS

STUDENT FINANCIAL AID 1990-1991 through 2003-2004



■ Scholarships ■ Work Study ■ Grants ■ Loans

	90-91	91-92	92-93	93-94	94-95	95-96
Scholarships	\$57,100	\$68,900	\$271,500	\$127,000	\$291,100	\$350,000
Work Study	\$66,700	\$77,000	\$77,000	\$77,000	\$87,000	\$87,000
Grants	\$1,155,700	\$1,427,900	\$1,752,600	\$2,184,200	\$2,323,000	\$2,338,500
Loans	\$1,205,800	\$1,593,100	\$2,189,900	\$2,988,100	\$3,300,000	\$3,622,000

	96-97	97-98	98-99	99-00	00-01	01-02
Scholarships	\$355,000	\$361,500	\$476,300	\$655,100	\$766,000	\$965,000
Work Study	\$72,800	\$102,500	\$201,400	\$135,800	\$185,400	\$205,700
Grants	\$2,368,100	\$2,637,100	\$3,353,200	\$3,614,800	\$3,586,800	\$3,984,900
Loans	\$3,827,300	\$3,660,800	\$3,881,000	\$4,405,800	\$4,170,900	\$4,409,300

	02-03	03-04
Scholarships	\$1,187,208.00	\$1,305,482.83
Work Study	\$110,631.86	\$126,500.94
Grants	\$4,185,923.78	\$4,523,981.80
Loans	\$5,661,058.00	\$6,466,569.00

STUDENTS

ENROLLMENT BY LOUISIANA PARISH – Fall 2004

Acadia Parish	662	St. Landry Parish	899
Allen Parish	105	St. Martin Parish	72
Ascension Parish	6	St. Mary Parish	21
Avoyelles Parish	8	St. Tammany Parish	12
Beauregard Parish	9	Tangipahoa Parish	2
Bossier Parish	3	Terrebonne Parish	1
Caddo Parish	2	Vermilion Parish	108
Calcasieu Parish	34	Vernon Parish	1
Cameron Parish	2	Washington Parish	1
Concordia Parish	3	Webster Parish	1
East Baton Rouge Parish	26	West Baton Rouge Parish	4
East Feliciana Parish	2	West Feliciana Parish	2
Evangeline Parish	408	Winn Parish	2
Grant Parish	1		
Iberia Parish	70	Non-Louisiana Residents	16
Iberville Parish	4		
Jackson Parish	1	Total Enrollment	3071
Jefferson Davis Parish	124		
Jefferson Parish	3		
Lafayette Parish	370		
Lafourche Parish	6		
Lincoln Parish	2		
Livingston Parish	7		
Natchitoches Parish	3		
Ouachita Parish	4		
Plaquemines Parish	1		
Pointe Coupee Parish	30		
Rapides Parish	26		
Richland Parish	1		
St. Bernard Parish	1		
St. Charles Parish	1		
St. Helena Parish	1		
St. James Parish	1		
St. John Parish	1		

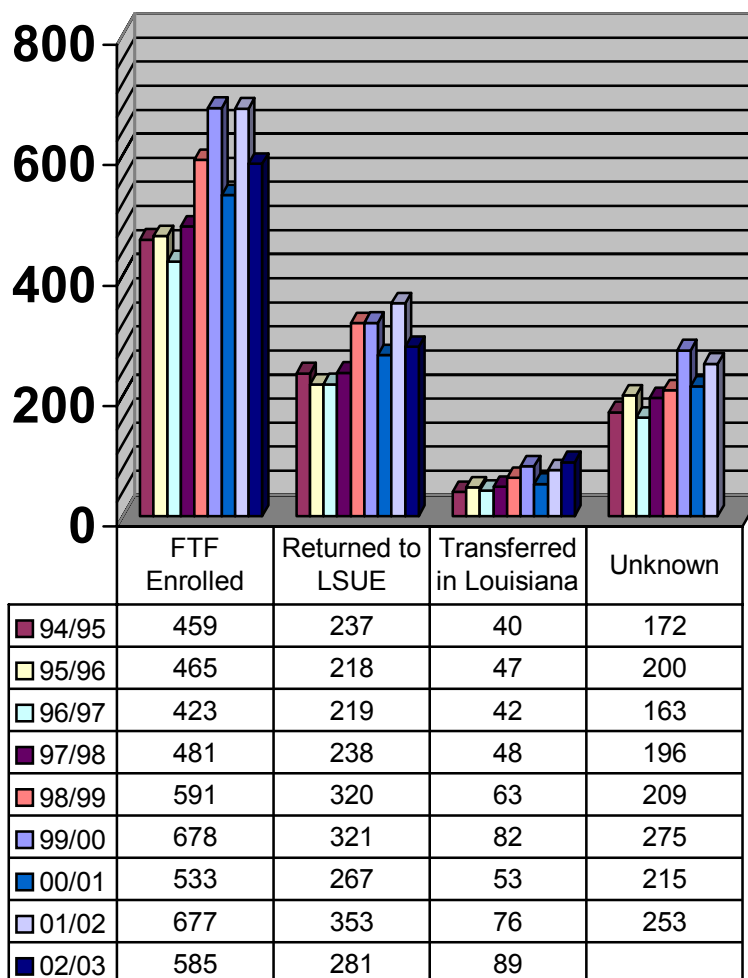


STUDENTS

FALL-TO-FALL RETENTION OF FIRST-TIME FULL-TIME STUDENTS

Initial Enrollment	FTF Enrolled	Returned to LSUE	Transferred in Louisiana	Unknown	Retention Rate
94/95	459	237	40	172	62.5%
95/96	465	218	47	200	57.0%
96/97	423	219	42	163	61.5%
97/98	481	238	48	196	59.3%
98/99	591	320	63	209	64.6%
99/00	678	321	82	275	59.4%
00/01	533	267	53	215	59.7%
01/02	677	353	76	253	62.6%
02/03	585	281	89	215	62.7%

- Source: Louisiana Board of Regents Statewide Student Profile System



STUDENTS

GRADUATION RATES AND STUDENT PERSISTENCE

FIRST-TIME FULL-TIME STUDENTS

Session	Percentage of Students Receiving the Degree in a Given Number of Years						
	Less than 3 Years	3 years	4 years	5 years	6 years	7 Years	8 Years
FALL 94	2.4	9.8	13.4	15.2	15.6	16.3	16.5
FALL 95	2.3	8.0	11.9	12.8	13.8	13.8	14.0
FALL 96	3.7	11.5	14.5	15.2	16.3	16.6	17.2
FALL 97	4.4	10.2	14.6	15.8	16.6	16.6	
FALL 98	4.6	12.2	15.6	16.6	17.6		
FALL 99	6.3	11.7	15.0	16.4			
FALL 00	5.0	11.9	15.0				
FALL 01	3.8	8.4					

FIRST-TIME FULL-TIME ASSOCIATE DEGREE SEEKING STUDENTS

Session	Percentage of Students Receiving the Degree in a Given Number of Years						
	Less than 3 Years	3 years	4 years	5 years	6 years	7 Years	8 Years
FALL 94	2.0	9.5	13.8	16.1	16.8	17.4	17.8
FALL 95	3.0	9.1	12.5	13.4	14.6	14.6	14.6
FALL 96	3.6	13.8	18.2	19.0	19.8	19.8	20.6
FALL 97	5.8	14.4	18.5	19.5	20.2	20.2	
FALL 98	5.8	16.7	21.4	22.7	23.6		
FALL 99	8.3	14.3	18.1	19.9			
FALL 00	6.3	12.6	16.4				
FALL 01	3.3	3.3					

PERSISTENCE DATA ON ALL FIRST-TIME FRESHMEN STUDENTS

Session	# FF	Students Continuing in Subsequent Years							
		1997	1998	1999	2000	2001	2002	2003	2004
FALL 96	637	276	181	81	40	31	29	16	23
FALL 97	599		288	166	75	47	46	34	22
FALL 98	718			376	196	105	63	52	25
FALL 99	869				379	219	115	68	40
FALL 00	793					379	230	125	67
FALL 01	827						421	239	127
FALL 02	931							416	232
FALL 03	964								436

FACULTY

FACULTY PROFILE – FALL 2004

FACULTY DISTRIBUTION

Division	Full-Time	Part-Time	Total
Business and Technology	11	17	28
Liberal Arts	33	33	66
Library	3	0	3
Nursing and Allied Health	18	4	22
Sciences	24	8	32
TOTAL	89	62	151

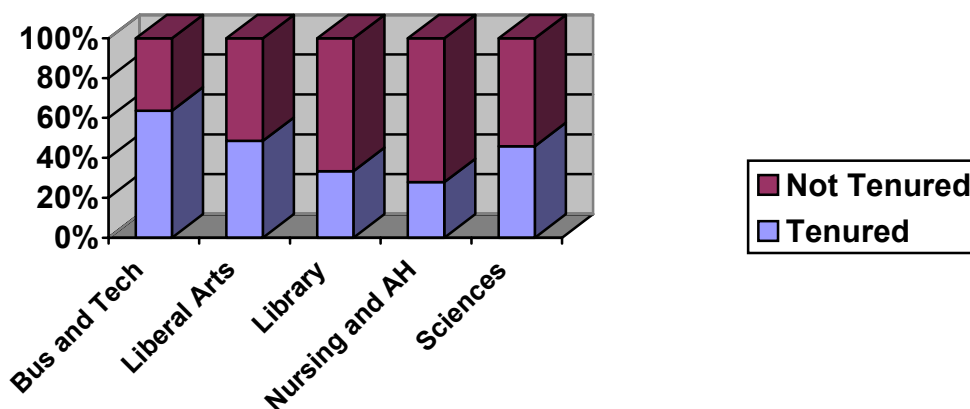
Full-Time Faculty includes all full-time employees with academic rank excluding the Chancellor.

Part-Time Faculty includes all full-time professional employees with part-time teaching status.

DISTRIBUTION OF FULL-TIME FACULTY BY ACADEMIC RANK

Division	Professor	Associate Professor	Assistant Professor	Instructor	Tenured
Business and Technology	5	2	3	1	7
Liberal Arts	8	8	6	11	16
Library	0	2	0	1	1
Nursing and Allied Health	2	3	3	10	5
Sciences	7	4	7	6	11
TOTAL	22	19	19	29	40

Percentage of Full-Time Tenured Faculty by Division

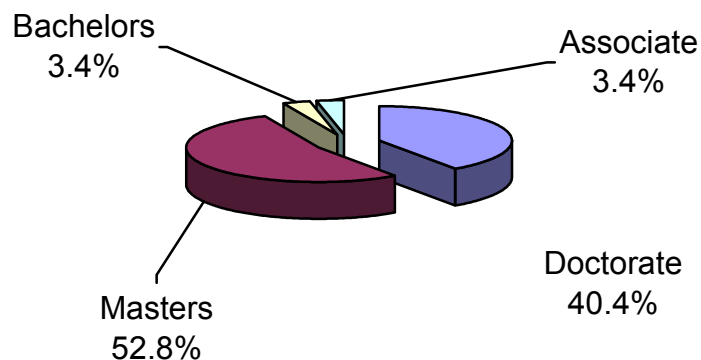


* Source: Academic Affairs

FACULTY

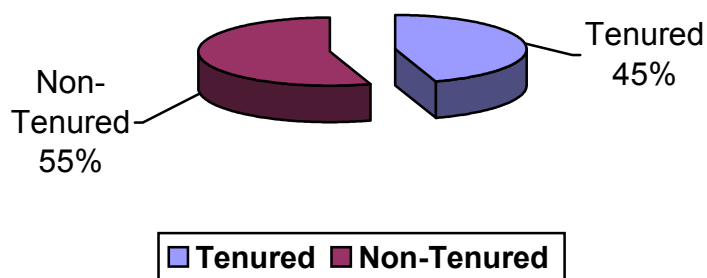
FACULTY PROFILE – FALL 2004

Highest Degree Earned by Full-Time Faculty



* Source: Academic Affairs

Percentage of Tenured Full-Time Faculty Members

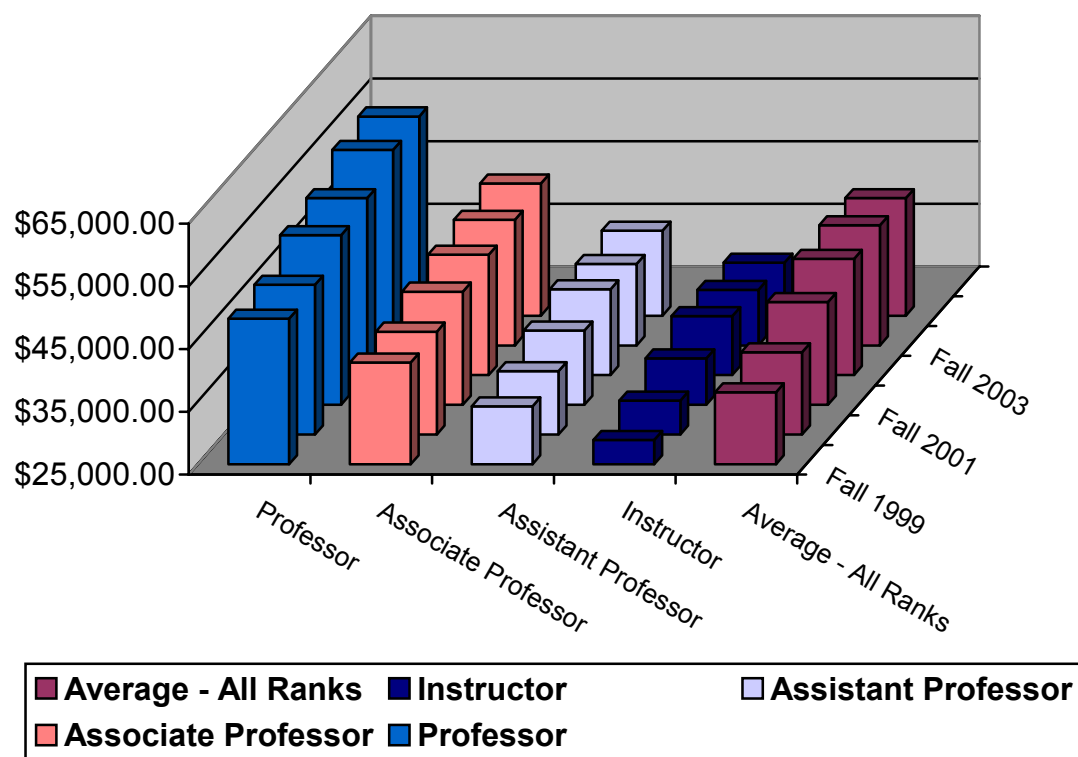


* Source: Academic Affairs

Includes all Full-Time employees with academic rank, excluding the Chancellor.

FACULTY

AVERAGE FACULTY SALARY BY RANK 1999 - 2004



	FALL 1999	FALL 2000	FALL 2001	FALL 2002	FALL 2003	FALL 2004
Professor	\$48,176	\$48,857	\$52,047	\$53,205	\$56,178	\$56,757
Associate Professor	\$41,211	\$41,393	\$43,031	\$44,168	\$45,000	\$46,081
Assistant Professor	\$34,251	\$35,101	\$36,824	\$38,684	\$37,977	\$38,536
Instructor	\$28,858	\$30,412	\$32,410	\$34,417	\$33,822	\$33,431
Average – All Ranks	\$36,486	\$38,107	\$41,365	\$43,538	\$44,118	\$43,744

* Source: Business Affairs

STAFF

STAFF PROFILE – FALL 2004

FULL-TIME

	Male		Female		Total	Minorities	
	N	%	N	%		N	%
Executive / Administrative	3	75	1	25	4	1	25
Professional Non-Faculty	12	33	24	67	36	12	33
Secretarial / Clerical	0	0	28	100	28	3	11
Skilled Crafts	8	100	0	0	8	4	50
Service / Maintenance	16	73	6	27	22	12	55
TOTAL	39	40	59	60	98	32	33

PART-TIME

	Male		Female		Total	Minorities	
	N	%	N	%		N	%
Executive / Administrative	0	0	0	0	0	0	0
Professional Non-Faculty	0	0	0	0	0	0	0
Secretarial / Clerical	0	0	3	100	3	0	0
Skilled Crafts	0	0	0	0	0	0	0
Service / Maintenance	0	0	0	0	0	0	0
TOTAL	0	0	3	100	3	0	0

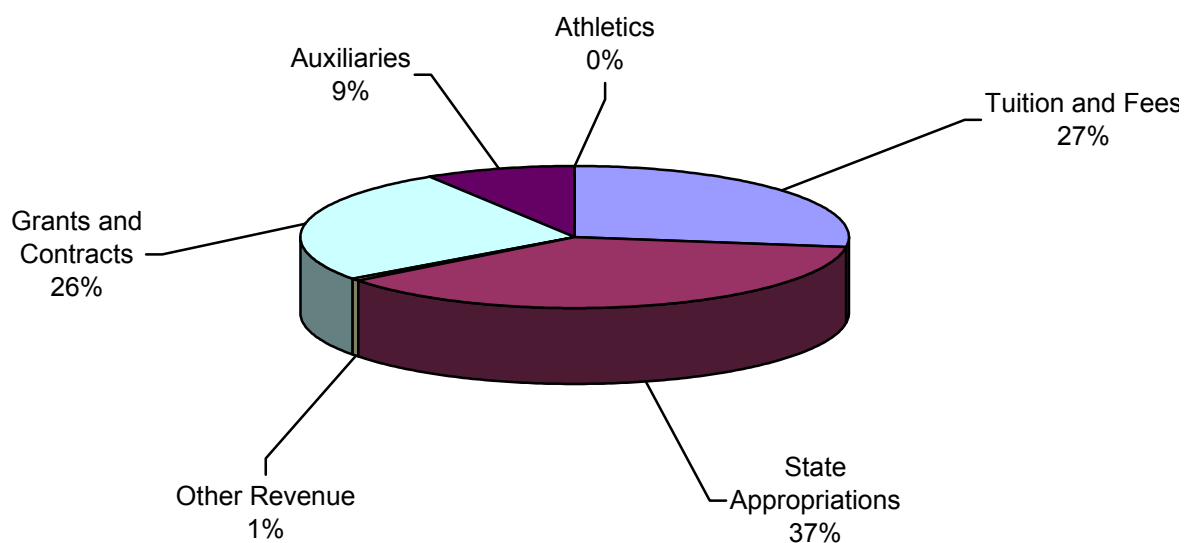
TOTAL

	Male		Female		Total	Minorities	
	N	%	N	%		N	%
Executive / Administrative	3	75	1	25	4	1	25
Professional Non-Faculty	12	33	24	67	36	12	33
Secretarial / Clerical	0	0	31	100	31	3	10
Skilled Crafts	8	100	0	0	8	4	50
Service / Maintenance	16	73	6	27	22	12	55
TOTAL	39	39	62	61	101	32	32

* Source: Human Resources

BUDGET

BUDGETED REVENUE – FY 04/05

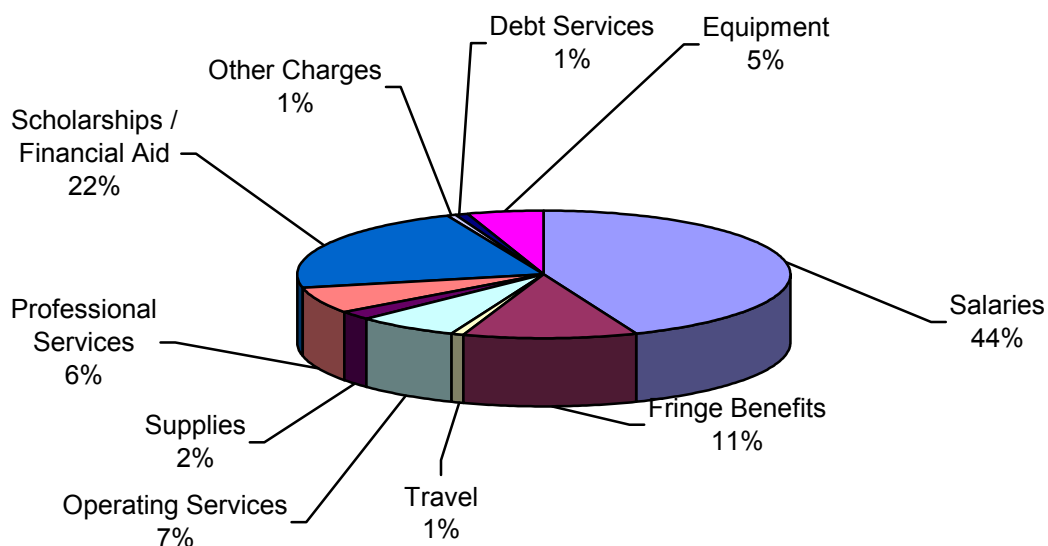


Category	Unrestricted	Restricted	Total
Tuition and Fees	\$5,345,656		\$5,345,656
State Appropriations	7,235,584		7,235,584
Other Revenue	151,100		151,100
Grants and Contracts		5,100,000	5,100,000
Auxiliaries		1,708,976	1,708,976
Athletics		14,500	14,500
TOTAL	\$12,732,340	\$6,823,476	\$19,555,816

* Source: Business Affairs

BUDGET

BUDGETED EXPENDITURES – FY 04/05

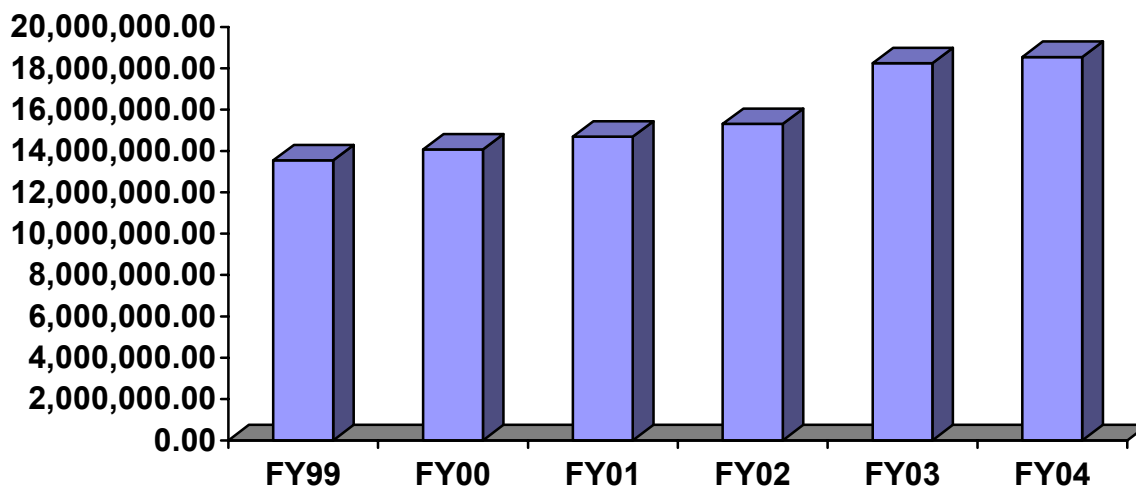


Category	Unrestricted	Auxiliary	Restricted	Total
Salaries	\$8,003,307	\$269,876	\$371,905	\$8,645,088
Fringe Benefits	2,074,641	31,500	133,909	2,240,050
Travel	117,233	47,500	31,250	195,983
Operating Services	1,162,234	78,600	62,348	1,303,182
Supplies	299,220	89,428	49,128	437,776
Professional Services	15,150	1,180,000	78,510	1,273,660
Scholarships / Financial Aid	222,421		4,114,676	4,337,097
Other Charges	46,182	23,872	68,774	138,828
Debt Services		135,000		135,000
Equipment and Major Repairs	791,952	17,500	189,500	998,952
TOTAL	\$12,732,340	\$1,873,276	\$5,100,000	\$19,705,616

* Source: Business Affairs

REVENUE

ALL SOURCES FY 1999 - 2005

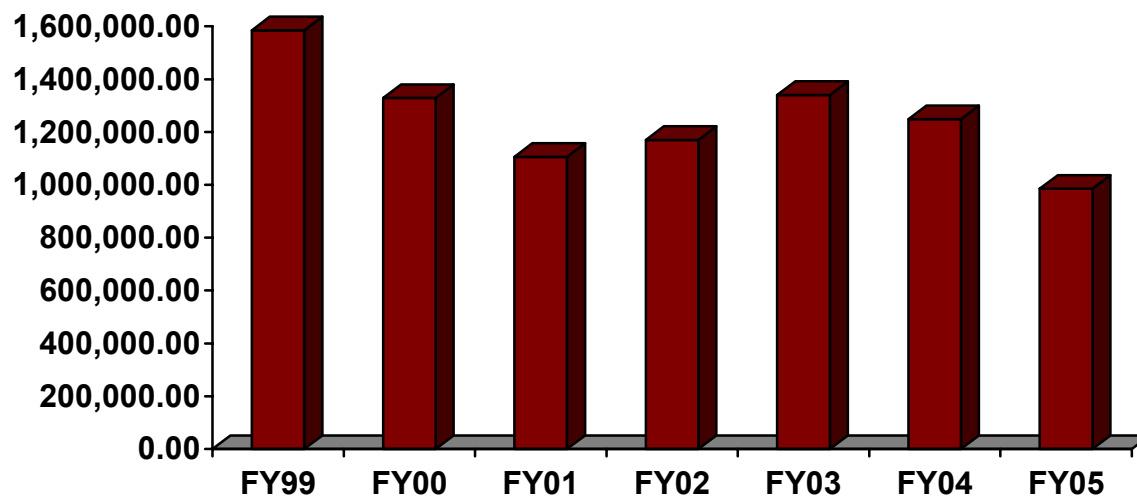


Fiscal Year	Unrestricted	Auxiliary	Restricted	Total
98/99	\$7,220,229	\$1,594,136	\$4,725,842	\$13,540,207
99/00	\$7,432,786	\$1,884,862	\$4,755,244	\$14,072,892
00/01	\$7,906,948	\$1,816,682	\$4,961,747	\$14,685,377
01/02	\$8,597,522	\$1,901,282	\$4,808,661	\$15,307,465
02/03	\$9,801,134	\$1,986,658	\$6,459,282	\$18,247,074
03/04	\$11,901,130	\$2,060,468	\$5,674,016	\$19,635,614
04/05 (<i>Budgeted</i>)	\$12,732,340	\$1,723,476	\$5,100,000	\$19,555,816

* Source: Business Affairs

GRANTS AND CONTRACTS

REVENUE FY 1999 – 2005

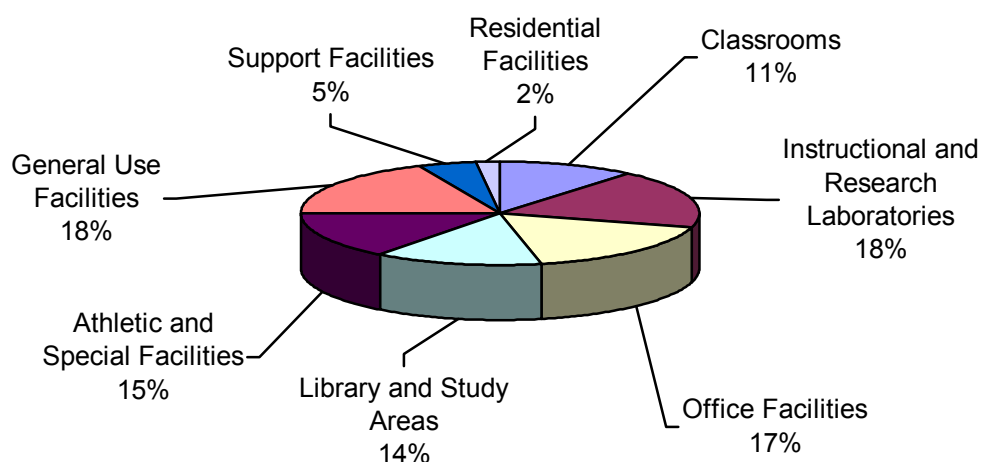


Fiscal Year	Amount
98/99	\$1,585,048
99/00	\$1,328,901
00/01	\$1,105,864
01/02	\$1,170,028
02/03	\$1,340,211
03/04	\$1,248,377
04/05 (<i>Budgeted</i>)	\$ 985,324

* Source: Business Affairs

Physical Facilities

ASSIGNABLE SPACE BY TYPE

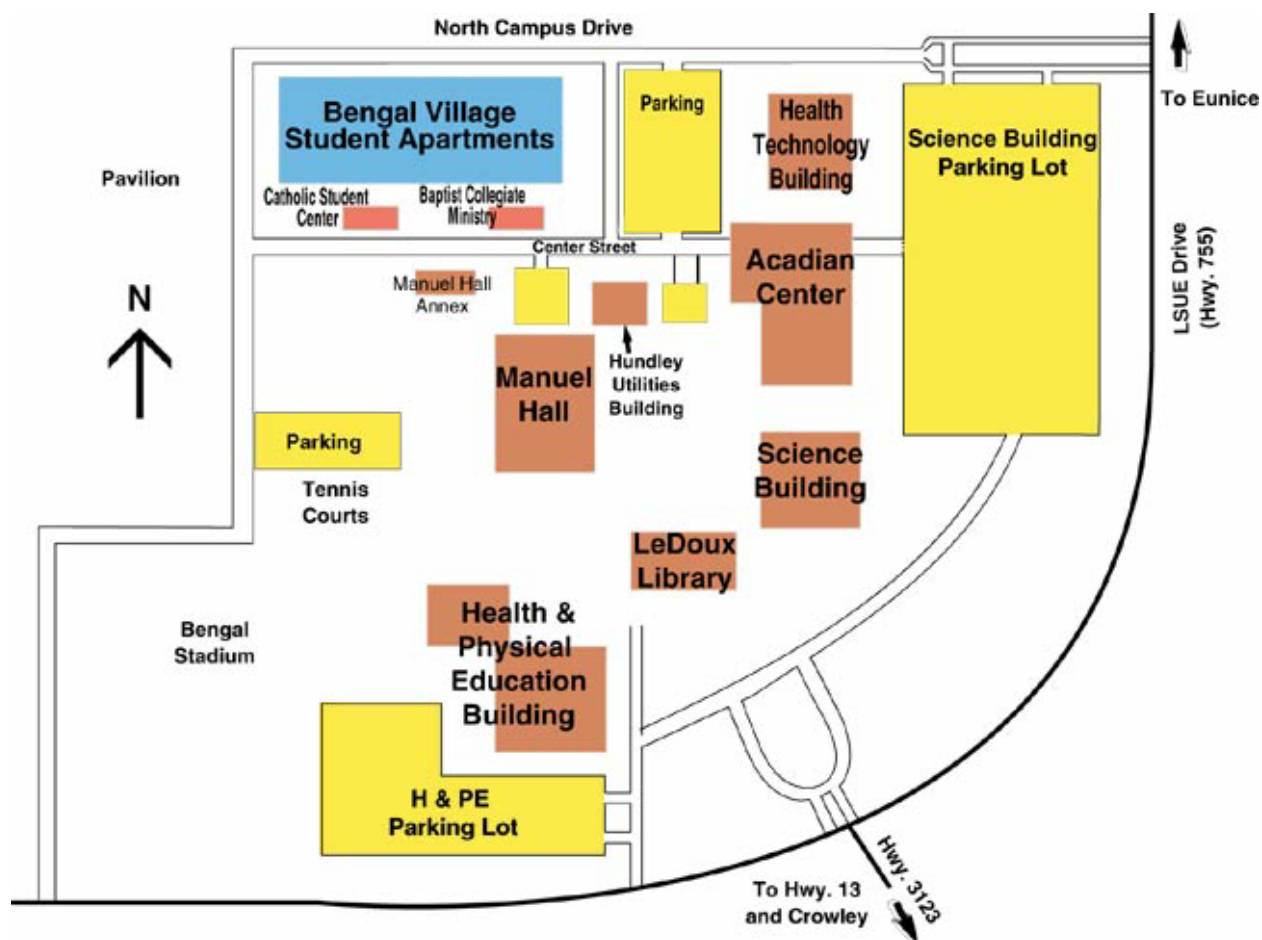


Use of Space	Assignable Square Feet	% of Total
Classrooms	23,749	11%
Instructional and Research Laboratories	38,836	18%
Office Facilities	36,562	17%
Library and Study Areas	29,212	14%
Athletic and Special Facilities	31,389	15%
General Use Facilities (food service, lounge, exhibition areas)	39,086	18%
Supporting Facilities (warehouses, computer facilities, physical plant)	10,010	5%
Residential Facilities	4,141	2%
TOTAL	212,985	100.00%

* Source: Board of Regents Facilities Inventory System: Fall 2003

Physical Facilities

UNIVERSITY CAMPUS



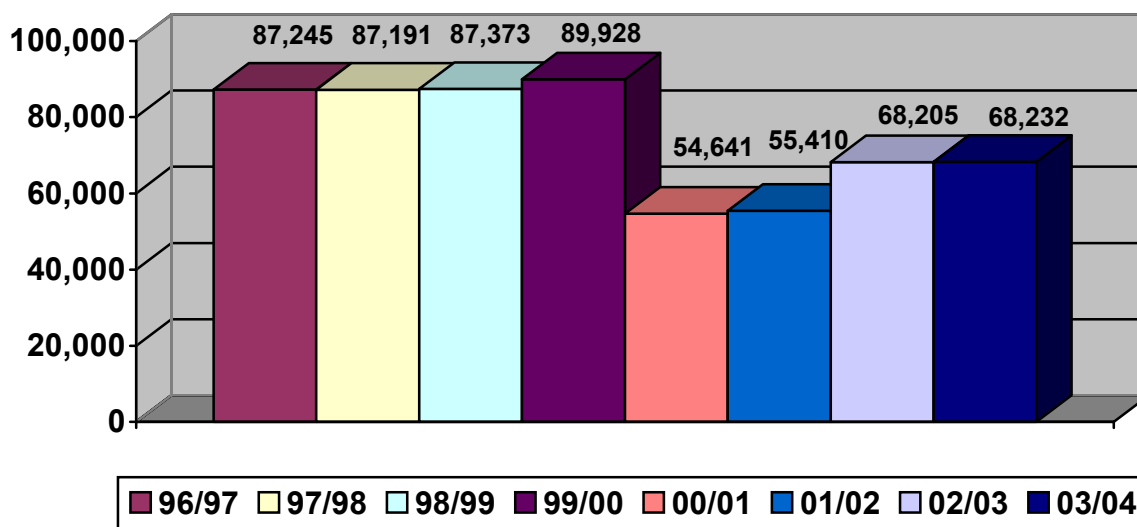
Main Campus Offices

- Academic Assistance Office, Science Building, Room 150
- Admissions, Manuel Hall, Room 102
- Business and Technology Division, Manuel Hall, Room 205
- Business Affairs Office, Science Building, Room 111
- Chancellor's Office, Science Building, Room 105
- Continuing Education Office, Health and PE Building, Room 109
- Developmental Education, Manuel Hall, Room 209
- Financial Aid Office, Acadian Center, Room 110
- Liberal Arts Division, Manuel Hall, Room 147
- Nursing and Allied Health Division, Health Technology Building, Room 104
- Registrar, Manuel Hall, Room 102
- Sciences Division, Science Building, Room 207
- Student Affairs Office, Acadian Center, Room 112

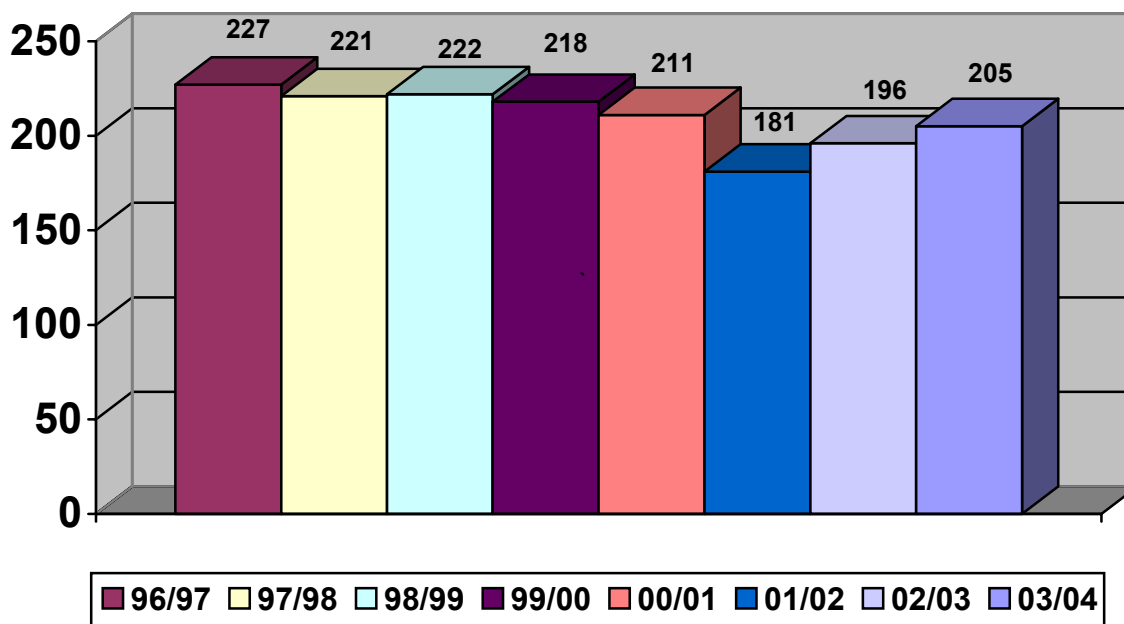
LEDOUX LIBRARY

LIBRARY HOLDINGS - 1996/1997 THROUGH 2003/2004

Volumes



Serial Subscriptions



LEDOUX LIBRARY

LIBRARY OVERVIEW - 1996/1997 THROUGH 2003/2004

LIBRARY HOLDINGS

Year	Volumes	Subscriptions	Federal Documents
1996/1997	87,245	227	127,851
1997/1998	87,191	221	124,257
1998/1999	87,373	222	124,142
1999/2000	89,928	218	125,724
2000/2001	54,641	211	128,188
2001/2002	55,410	181	130,433
2002/2003	68,205	196	131,890
2003/2004	69,554	205	133,048

CIRCULATION

Year	96/97	97/98	98/99	99/00	00/01	01/02	02/03	03/04
Number of Volumes	8,789	8,778	7,976	7,018	6,223	5,192	5,226	5,067

INTERLIBRARY LOAN

Year	96/97	97/98	98/99	99/00	00/01	01/02	02/03	03/04
Loaned to Others	60	21	21	1	0	2	1	0
Borrowed from Others	216	202	202	250	364	55	47	27

* Source: LSUE Library