

# LOUISIANA STATE UNIVERSITY AT EUNICE

## FACT BOOK – FALL 2002



Louisiana State University – Eunice  
Office of Institutional Research  
December 2002



## GENERAL INFORMATION

---

### University Profile – Fall 2002

<b>Headcount Enrollment:</b>	<b>3,144</b>
<b>Full-time:</b>	<b>1,712 (54%)</b>
<b>Part-time:</b>	<b>1,432 (46%)</b>
<b>Full-Time Equivalents:</b>	<b>2,675 (1 FTE = 12 SCH)</b>
<b>Tri-parish Enrollment:</b>	<b>2,112 (67%)</b>
<i>(Acadia, St. Landry, and Evangeline Parishes)</i>	

The female population at LSUE represents 71% of the total enrollment.

Minority enrollment at LSUE has reached an all-time high of 25.8%.

The average (mean) age of the student body is 25.  
     (mode) 19  
     (median) 46

#### Enrollment by Curriculum Type:

<b>Associate Degree:</b>	<b>1,698 (54%)</b>
<b>Transfer Program:</b>	<b>1,177 (37%)</b>
<b>Undecided:</b>	<b>269 ( 9%)</b>

**Average ACT Score: 18.1**

LSUE employs a faculty of 131 of which 52% are full-time.

LSUE employs a staff of 94 of which 96% are full-time.

The university's total budget is \$ 15,913,317.

The university library contains 91,097 volumes and subscribes to 181 periodicals.

# GENERAL INFORMATION

---

## History of the University

### The University System

The Louisiana State University and Agricultural and Mechanical College System is a multicampus, multipurpose system of higher education serving all of Louisiana. It exerts a major influence on the economic, social, and cultural life of the citizens of the state. The LSU System is composed of eight institutions located throughout the state. Two of these—LSU and the University of New Orleans—are full universities, providing broad areas of undergraduate and graduate instruction as well as extensive research programs. LSU in Shreveport is at present primarily a four-year undergraduate degree-granting campus which offers graduate study only in selected fields. In addition to these, two-year colleges are located at Alexandria and Eunice. The LSU Medical Center, which is also part of the LSU System, has three campuses: two in New Orleans and one in Shreveport. The Center includes the Schools of Medicine, Dentistry, Nursing, and Allied Health Professions, as well as a Graduate School. The Hebert Law Center is located in Baton Rouge.

The LSU Agricultural Center, established in 1972 by the LSU Board of Supervisors as an autonomous element of the LSU System, includes both the Agricultural Experiment Station and the Cooperative Extension Service as well as their statewide agricultural facilities. Administrative headquarters for the Center is located at Baton Rouge. The governing body of the LSU System is a Board of Supervisors appointed by the Governor. The System is headed by a president. The chief administrative officer for each campus is a chancellor.

### Establishment of LSU at Eunice

LSU at Eunice is located just southwest of Eunice along Louisiana Highway 755 on a 196-acre tract of land originally belonging to the Arnold LeDoux family, which donated fifty acres for the establishment of the University campus. The University originally purchased an additional fifty acres and later acquired another 95.83 acres for future expansion. The campus is located in Acadia Parish, near the boundaries of Evangeline and St. Landry Parishes, in a rich and fertile section of Southwest Louisiana referred to as “the tri-parish area.”

Louisiana State University at Eunice was authorized by Act 74 of the 1964 Legislature to extend additional educational facilities and opportunities to Southwest Louisiana as a basic and integral part of the LSU System. The LSU Board of Supervisors, acting under the authority granted them by law, set in motion the chain of events leading to the establishment of a two-year commuter college at Eunice, with ground-breaking ceremonies in May, 1966.

## Institutional Mission

The basic mission of Louisiana State University and Agricultural and Mechanical College was established by the Louisiana State Legislature in Revised Statute 17-1442: The University is established and maintained to serve the needs of the people of the state. It shall seek to expand the areas of knowledge and understanding through scientific and speculative inquiry and in various ways shall encourage and assist the people of the state to fuller development of their resources. With these ends in view, an adequate program of studies shall be provided in the liberal arts and sciences, in the important vocational and professional subjects including agriculture, business and commerce, education, engineering, law, medicine, and military science and tactics; and additional courses may be provided in such other subjects as shall appear to be worthy of inclusion in the program of the University. Libraries and laboratories adequate for important and effective research and investigation shall be provided and maintained.

Though the primary purpose of the University is to provide and maintain the highest type of instruction in the various important branches of knowledge for graduates of the high school course of study, it shall also offer such opportunities for instruction as may be practicable to persons in the state who are not in residence on any of its campuses.

The purpose of Louisiana State University at Eunice is to serve the needs of its constituency in keeping with the mission of the overall Louisiana State University System. Specifically, LSUE seeks to provide programs and services normally associated with a comprehensive community college. Accordingly, the role, scope, and mission statement for LSU at Eunice, as adopted by the Louisiana Board of Regents in October of 1993, is as follows:

Louisiana State University at Eunice (LSUE), a member of the Louisiana State University System, is categorized by the Southern Regional Education Board as a Two-Year I College serving southwest Louisiana. As an open-admissions community college, LSUE serves the educational needs of this population primarily through a select number of associate degree programs in business and office occupations, computer information technology, criminal justice, fire science, nursing, radiologic technology, and respiratory care technology. LSUE is designated as a statewide provider of undergraduate instruction in fire science outside of metropolitan New Orleans. The institution offers courses and associate of arts and science degrees for students who wish to transfer to a senior college. LSUE serves as a multi-purpose resident center of LSU and A&M College.

LSUE should continue to serve the educational and cultural needs of its service area by offering necessary certificate and associate degree programs. Since high quality technical programs are crucial to economic development, the institution should continue to expand its relationship with local business and industry to identify area workforce needs. The institution should also work closely with four-year colleges in the area to further increase matriculation opportunities for its students. Public service activities should be undertaken to meet the needs of the service area and to raise the level of education and improve the quality of life for area citizens.

## **Philosophy**

Louisiana State University at Eunice is committed to the principle that individuals should have the opportunity to develop themselves through education commensurate with their capabilities and interests. To this end, the University strives to provide educational programs and related services which reflect and respond to the diversified interests, aptitudes, talents, needs, and goals of its constituency.

## **Goals**

To fulfill its mission, Louisiana State University at Eunice is committed to achieving the following goals:

1. Students complete associate degree or certificate programs prepared to enter the work force.
2. Students complete the first two or more years of baccalaureate study prepared to transfer to four-year institutions to complete their degrees.
3. Students fulfill general education and continuing education needs through a variety of educational offerings at various teaching sites and times.
4. Students who need developmental instruction acquire the knowledge and skills to prepare them for collegiate study.
5. Students receive support and assistance in reaching academic, personal, career, and employment goals.
6. Students participate in extracurricular activities to meet personal, artistic, or intellectual interests.
7. Students find facilities and resources adequate in classrooms, laboratories, the library, and recreational areas.
8. Citizens of LSUE's service area find educational opportunities to meet changing employment needs.
9. Citizens experience cultural enrichment and personal development through participating in programs offered as a community service.

In pursuing these goals, Louisiana State University at Eunice is committed to maintaining the highest academic and professional standards in all of its educational and related programs and services. To this end, the University will endeavor to recruit the best qualified personnel available for its various programs and will encourage the professional growth of administrators, faculty, and staff as a continuous process.

# GENERAL INFORMATION

---

## Institutional Overview

### Academic Offerings

Louisiana State University at Eunice offers a wide range of courses and programs for the student wishing to pursue a four-year degree as well as for the student wishing to prepare for a career in two years or less of study. Louisiana State University at Eunice is accredited by the Commission on Colleges of the Southern Association of Colleges and Schools to award associate degrees.

Students pursuing a four-year degree can ordinarily complete at least the first two years of their program at LSUE. Courses taken by these students are usually the same in number, title, credit, and content as those offered on the Baton Rouge campus. Students pursuing the baccalaureate degree may major in such areas as business administration, education, humanities, social sciences, agriculture, engineering, natural sciences, and pre-professional preparation.

For students seeking career preparation in only two years, LSU at Eunice offers associate degree programs in computer information technology, criminal justice, fire science, general studies, management, nursing, office administration, paralegal studies, public and industrial security, radiologic technology, and respiratory care. Although most of these programs are designed primarily to prepare students for immediate employment, credits earned in them are usually acceptable for transfer if the student later decides to work toward a four-year degree.

### Developmental Studies Program

The Developmental Studies Program coordinates courses and support services designed to prepare students for college-level studies. The program consists of writing skills (English 0001), quantitative skills (Mathematics 0001, 0002, 0007), reading skills (Developmental Studies 0008), and academic and personal skills (Developmental Studies 0004). Students are placed in the courses according to their levels of proficiency in each academic area and may take one or more such courses. In addition, the Developmental Studies Program includes tutoring, counseling, and academic advisement services.

Students whose ACT scores indicate they need development work are invited to a special preregistration orientation and testing session for further evaluation and to plan an initial program of courses. During each semester, students in the program are required to meet with their academic advisors at least three times to discuss their current work and plan for subsequent semesters.

Through these various components, the Developmental Studies Program helps students gain the preparation they need to achieve their educational goals in college.

### my.LSUE

The my.LSUE system provides students with anytime-anywhere access to key university information and services. The system can be accessed via any Internet-connected computer or via many custom kiosks located throughout the campus. Using my.LSUE, you can:

- send and receive electronic mail
- access library databases and indexes
- access and verify demographic and program information including your address, tele-phone, advisor, major, academic status, and other information
- view your current semester schedule with mid-term and final grades when posted
- check for any outstanding "holds" that may prevent you from registering for classes
- estimate your grade-point average based on the grades you expect to earn in the current semester and view the impact on your overall GPA

- view your academic transcript on-line
- view and print a fee bill showing your tuition and fees
- register for classes on-line, including the ability to drop and add courses
- change your Personal Identification Number (PIN number) used to access my.LSUE
- view and interact with on-line course areas which are created for each course section taught at the University
- access instructor-posted materials including lecture notes, syllabi, and interactive discussion areas
- check current local weather conditions
- access the LSUE on-line bookstore to view both new and used book prices

my.LSUE account information is mailed to new students as they apply for admission. Electronic mail accounts will not become active until students have registered for classes and paid fees. Current students may pick up their Login and PIN information at any time from the Office of Information Technology located in Manual Hall, Room 105.

### **Undergraduate Research Summer Institute**

With support from the LSUE Foundation, the Undergraduate Research Summer Institute (URSI) provides an opportunity for LSUE faculty/student teams to carry out investigational activities which will enrich the experience for the talented undergraduate, while also providing LSUE faculty with a professional development opportunity on a discipline-specific topic of interest to them.

### **Course Articulation Agreements with Louisiana Technical College Campuses**

Louisiana State University at Eunice has course articulation agreements with four campuses in the Louisiana Technical College System (LTCS). These agreements identify specific courses that will transfer between the four LTCS campuses and LSUE. For more information on these transfer agreements, contact the LSUE Division of Business and Technology.

### **Campus Facilities**

The campus at Louisiana State University at Eunice consists of a 196-acre tract of land, which extends along Louisiana Highway 755 southwest from downtown Eunice.

**LIBRARY** The Arnold LeDoux Library provides a variety of informational resources for use by students, faculty, and the community. Those resources include a book collection of more than 100,000 volumes, periodicals, and audio-visual materials varied in coverage and format. Developed to meet the needs of academic programs offered at LSUE, the collection covers many fields of interest.

The Library is also a depository for both state and federal documents. Louisiana documents are included in a special Louisiana collection housed on the first floor. The book, periodical, and document collections of the Library can be accessed through automated indexing services. New library users are provided assistance and instruction in how to use the library and its resources.

Photocopiers, microfiche readers and printers, and personal computers are provided for the students' convenience.

**SCIENCE BUILDING** The administrative offices of the Chancellor and the Vice Chancellor for Business Affairs are housed in the Science Building. This building has specially designed rooms equipped for lectures, demonstrations, and laboratory work in the physical and biological sciences. In addition to regular classrooms and faculty and staff offices, the building contains a large amphitheater-classroom and several research laboratories for use by both faculty and students.

**GLADNEY L. MANUEL, SR. HALL** Gladney L. Manuel, Sr. Hall houses the Office of Academic Affairs, the Registrar's Office, the Office of Admissions, the Division of Business and Technology, and the Division of Liberal Arts. Among the educational facilities available in this building are a distance learning laboratory, computer laboratories, complete ceramics and design studios for art, and a tiered lecture-auditorium.

**HEALTH TECHNOLOGY BUILDING** The Health Technology Building, which opened in fall 1997, houses programs in nursing, radiologic technology, and respiratory care. The 43,700-square-foot facility includes the Office of the Division of Nursing and Allied Health, classrooms, health care laboratories, a 250-seat auditorium with satellite TV connections, a computer laboratory, and an audiovisual laboratory.

**ACADIAN CENTER** Fall 1971 marked the opening of the Acadian Center. Although planned for multipurpose use, its versatility does not hamper the beauty of the building, the name of which reflects the rich Acadian heritage of the tri-parish area. Practicality and comfort are skillfully blended in the Acadian Center, which was designed to serve the students, faculty, and staff of LSUE.

Members of the LSUE community may enjoy fireside chats in the comfortable lounge area, obtain food service ranging from snacks to full meals, participate in the activities of the games area, relax in the television-viewing area, or spend time between classes enjoying one of the prime advantages of a commuter college, the friendly atmosphere founded on familiar faces and a wide circle of acquaintances.

The Acadian Center also houses the Office of Student Affairs, the Book Store, the Office of Financial Aid, Campus Security, and the Student Government Association office. Banquet service for smaller groups is available in a special meeting room, while the main dining area, which normally seats approximately 400 people, may be used to accommodate up to 500 people at larger banquets.

**HEALTH AND PHYSICAL EDUCATION BUILDING** Included in the Health and Physical Education Building are a gymnasium with a standard-size basketball court plus cross-courts; a heated swimming pool; an indoor archery range that can also be used for golf driving; an inlaid putting surface; and a weight training and conditioning room. Besides basketball, the court area is designed for such activities as indoor tennis, badminton, volleyball, and gymnastics. The facilities are used for instruction but are also available at scheduled times for recreational use by students and faculty.

The **BAPTIST COLLEGIATE MINISTRY** opened in the 1976 spring semester. Its major purpose is the spiritual enrichment of students. This is accomplished through Bible studies, inspirational speakers, and a variety of special events with spiritual growth as their aim. The BCM also offers a place for students to play ping pong, listen to music, find a quiet corner in which to study, or just talk with friends between classes. The building has a comfortable recreation-conference area complete with fireplace, kitchen facilities, a director's office, and a television room. Sponsored jointly by the Louisiana Baptist Convention and the Acadia Baptist Association, the BCM invites students of all faiths to share in its programs.

The **CATHOLIC STUDENT CENTER**, which opened in the fall of 1979, has a chapel and commons area, kitchen facilities, and quarters for the resident chaplain. The center is open Monday through Friday from 7:30 a.m. to 5 p.m. and Sunday evening for Mass. The center houses a variety of student activities, retreats, counseling services, study programs in scripture and theology, and a social services program.

## Campus Publications

In addition to this catalog, Louisiana State University at Eunice publishes a Faculty Handbook, a Student Handbook, and various LSUE brochures. Both students and faculty assist in the editing of a campus newspaper, *The Bayou Bengal*.

## University Services

Since Louisiana State University at Eunice is an integral part of the surrounding community, many cooperative programs have been developed, and faculty and staff members are available as speakers for area schools, clubs, and organizations. The University sponsors various cultural, civic, and informational programs such as visiting lecturers, artists and concert series, faculty lectures, and occasional book and art exhibits. Whenever possible, the public is invited to share in the educational, informational, and cultural activities of the campus.

**LSUE DISTRICT RALLY ASSOCIATION** Louisiana State University at Eunice serves as the host and testing center for literary, speech, and drama rallies held each spring for high school students in a nine-parish area. LSUE

presents scholarships to the highest scoring student in each of the forty-six literary categories and three speech categories.

**FOREIGN LANGUAGE FESTIVAL** Louisiana State University at Eunice is also the site of an annual festival sponsored by the Tri-Parish Foreign Language Teachers' Council. Participating high school students are given the opportunity to compete in several declamation categories. Certificates are awarded to the winners of the festival.

## **Housing**

Facilities are normally available in the community for students who desire to live near the University. Such housing is not under the supervision of the University.

## **Traffic Regulations**

All students must register motor vehicles for permits to park and operate them on campus. Students are held responsible for knowing and obeying campus traffic regulations.

## **Drug-Free Campus Policy**

It is the policy of LSU at Eunice to maintain a drug-free campus environment. Both the workforce and students shall remain drug-free and free of other substance abuse. The illegal use, possession, dispensation, manufacture, or sale of controlled substances and alcohol abuse by students while on campus is prohibited. Students who are convicted of violating the policy will be subject to disciplinary action within 30 days, including suspension or expulsion from the University. Anyone found to have violated the policy is also subject to referral to civil authorities as appropriate. The University will assist employees and students seeking rehabilitation by providing names, addresses, and telephone numbers of substance abuse facilities. Alcohol and drug awareness programs will also be presented. For the complete policy, including provisions affecting all employees, inquire in the Office of Student Affairs.

## **Public Safety**

LSUE is dedicated to preserving a peaceful and safe campus environment. Students, faculty, staff, and visitors are to report all crimes or suspicious activity to the Campus Security Office, the Vice Chancellor for Student Affairs, or any other administrative office. The Campus Security Office is located in the Acadian Center, Room A-101. In order to report a fire, accident, or emergency using a phone in any campus office, dial 9-911 (for assistance from off campus agencies) and then report the emergency on campus by calling ext. 225 or 218 or by contacting any administrative office. After regular business hours, emergencies should be reported on campus by dialing 225. Guards assigned to patrol areas throughout the campus will respond promptly to any call and are in direct radio contact with the municipal fire department, emergency medical services, and police officials. Campus Security consists of four full-time guards. Qualifications of guards meet the provisions of Louisiana law.

Campus Security provides a limited range of services, including accident investigations, emergency services, and crime prevention services. Administrative responsibility for security service for the campus rests with the office of the Vice Chancellor for Student Affairs.

Campus Security has jurisdiction on all University facilities, premises, and property. Campus Security reports the number and types of crimes monthly to the LSU Board of Supervisors. These figures are published annually, as a matter of public record, and may be obtained from the Campus Security Office or the Vice Chancellor for Student Affairs.

## **The LSUE Foundation**

The Louisiana State University at Eunice Foundation is a non-profit, tax exempt organization formed in 1992 to support programs and activities designed to advance and promote LSUE. The foundation accepts contributions from individuals, business and industry, professional groups, and philanthropic organizations.

The LSUE Foundation was established in recognition that state support does not provide all the necessary resources to fund quality educational programs at public higher education institutions. The foundation seeks funding so that it may provide the margin of excellence for the educational and other programs of the institution.



Funds raised by the foundation are used to enhance the services and operations of the campus to include general institutional development, community relations, faculty support, student support, and other activities.

Contributions to the LSUE Foundation are tax deductible. Contributors may designate that their donation be used for student scholarships, institutional development, or general foundation support. The foundation publishes an annual report detailing receipts, expenditures, and activities. Additional information regarding the LSUE Foundation is available from Sharon Leonards, Executive Director, LSUE Foundation, P.O. Box 1551, Eunice, LA 70535, phone (337) 550-1257.

### **Friends of the Library**

The Friends of the Library, a subdivision of the LSUE Foundation, is a support group of individuals from throughout the campus and the communities of LSUE's service area. Their support is offered in many ways: volunteer staffing for events such as exhibits or book sales, loan of displays or equipment, and financial support to extend the resources and services of the Library beyond the limits of its state budget allocation. Memberships range from \$10 for contributing members to \$500 for lifetime members. Further information is available from the LeDoux Library.

### **Office of Alumni Affairs**

The Office of Alumni Affairs is compiling a listing of all former LSUE students so that they can be notified of alumni activities and developments on campus. Alumni who want to update their address information can contact the Office of Alumni Affairs toll free inside Louisiana, 1-888-FOR-LSUE, ext. 205, or locally, 550-1205.

### **Continuing Education**

LSU at Eunice offers a variety of both credit and non-credit continuing education programs. Credit evening classes designed to meet the continuing education needs of students and community members are scheduled each semester on the LSUE campus and at off-campus locations. In addition, LSUE sponsors non-credit short courses and workshops as well as a summer enrichment program for children. Details are available from the Office of Continuing Education.

### **Distance Learning**

Manuel Hall and the Health Technology Building house distance learning laboratories connected with other university campuses in Louisiana through fully interactive compressed video technology. Classes can originate at any campus and be attended by students on any other campus. Students can communicate with one another and with the instructor using two-way audio and video. The distance learning laboratory enhances the educational opportunities available to LSUE students and all other Louisiana students. In addition to sending and receiving freshman and sophomore courses, LSUE also receives upper-level undergraduate and graduate courses from other universities in such fields as education, library science, horticulture, and other topics. For more information, contact the Office of Continuing Education.

# **INSTITUTIONAL AND PROFESSIONAL ACCREDITATION**

---

## **INSTITUTIONAL ACCREDITATION**

---

Louisiana State University at Eunice is a member of the Southern Association of Colleges and Schools. Founded in 1895, the association is voluntary, nonprofit, and nongovernmental. Membership is open to public and private educational institutions in eleven southern states and Latin America.

LSUE is accredited by the Commission on Colleges of the Southern Association of Colleges and Schools to award associate degrees.

## **PROFESSIONAL ACCREDITATION**

---

Division of Business and Technology – ISO 9002

Division of Nursing and Allied Health

- Associate Degree in Nursing – National League of Nursing
- Associate Degree in Radiologic Technology – Joint Review Committee on Education in Radiologic Technology
- Associate Degree in Respiratory Care – Joint Review Committee for Respiratory Therapy Education

## ADMINISTRATION OF THE UNIVERSITY

---

### Board of Supervisors

This list reflects Board membership and their term expiration at the time of publication.

Ronald R. Anderson, *Ethel, Chair* 2002  
 Roger H. Ogden, *New Orleans, Vice Chair* 2004  
 Tony Acosta, *New Orleans* 2002  
 Kent Anderson, *Monroe* 2002  
 Dr. Jack A. Andonie, *Metairie* 2006  
 Bernard E. Boudreaux, Jr., *New Iberia* 2004  
 Victor Bussie, *Baton Rouge* 2000  
 Charles V. Cusimano, *Metairie* 2006  
 Stanley J. Jacobs, *New Orleans* 2002  
 Laura A. Leach, *Lake Charles* 2000  
 William W. Rucks, IV, *Lafayette* 2004  
 Perry Segura, *New Iberia* 2000  
 Virginia K. Shehee, *Shreveport* 2004  
 C. Stewart Slack, *Shreveport* 2006  
 Charles S. Weems, III, *Alexandria* 2002  
 Roderick K. West, *New Orleans* 2006  
 William L. Jenkins, *President of the LSU System; Secretary to the Board*  
 Carleen N. Smith, *Administrative Secretary*

### Executives of the University System

William L. Jenkins, Ph.D., *President*  
 Dudley B. Fricke, M.S., *Special Assistant to the President*  
 Patrick Gibbs, M.B.A., *Vice-President for Property, Facilities, and Administration*  
 Robert H. Rasmussen, Ed.D., *Executive Assistant to the President*  
 William L. Silvia, Jr., M.P.A., *Executive Vice-President for Administration and Finance*  
 Marilyn Zimny, Ph.D., *Interim Vice-President for Academic Affairs and  
 TechnologyTransfer*

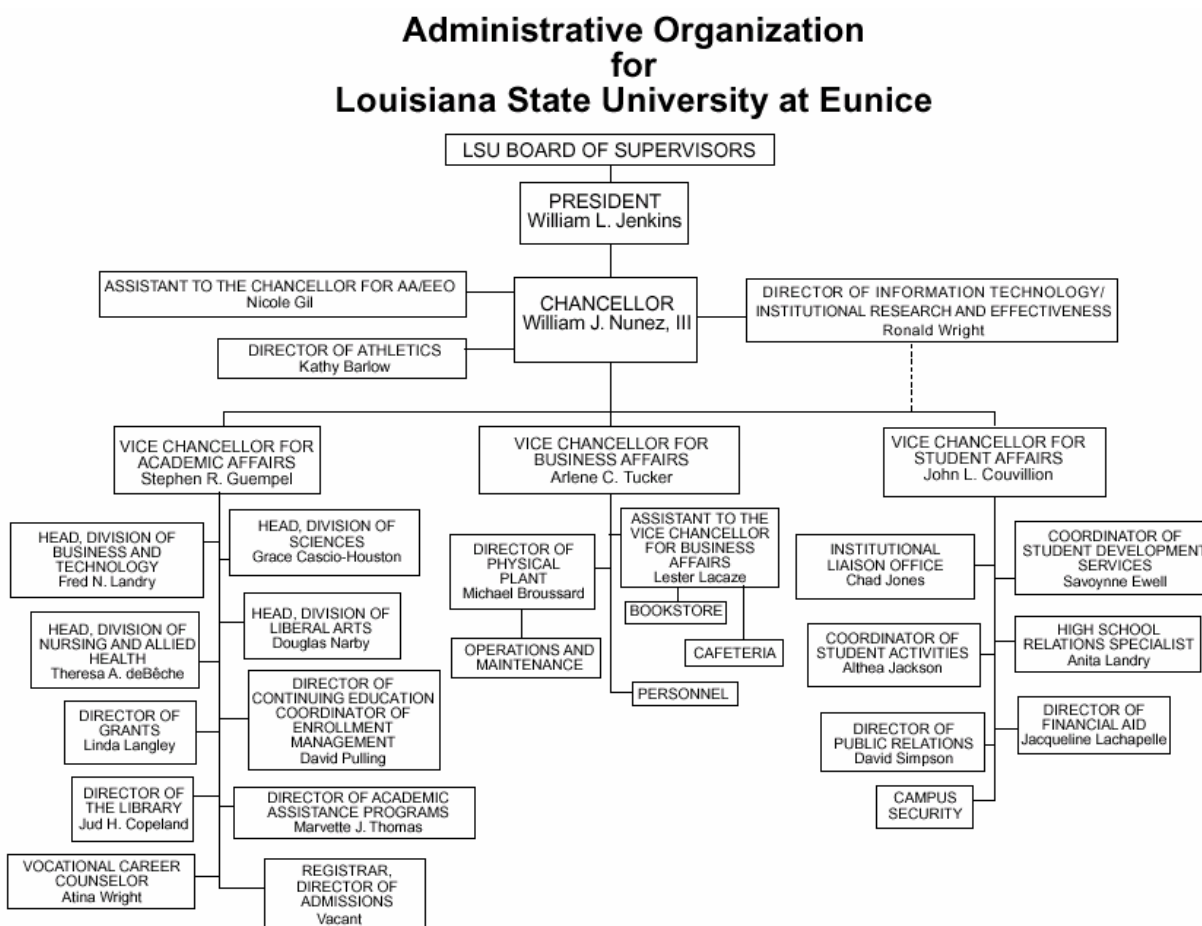
### **Executives of LSU at Eunice**

William J. Nunez, III, Ph.D., *Chancellor*  
 John L. Couvillion, Ph.D., *Vice Chancellor for Student Affairs*  
 Stephen R. Guempel, Ph.D., *Vice Chancellor for Academic Affairs*  
 Arlene C. Tucker, M.B.A., *Vice Chancellor for Business Affairs*

### **LSUE Administrative Council**

William J. Nunez, III, Ph.D., *Chancellor*  
 Michael Broussard, M.P.A., *Director of Physical Plant*  
 Vacant, *Registrar and Director of Admissions*  
 Grace Cascio-Houston, Ph.D., *Head, Division of Sciences*  
 John L. Couvillion, Ph.D., *Vice Chancellor for Student Affairs*  
 Theresa A. deBêche, M.N., *Head, Division of Nursing and Allied Health*  
 Nicole Gil, J.D., *Special Assistant to the Chancellor for AA/EEO*  
 Stephen R. Guempel, Ph.D., *Vice Chancellor for Academic Affairs*  
 Lester Lacaze, B.S., *Assistant to the Vice Chancellor for Business Affairs*  
 Jacqueline Lachapelle, B.S., *Director of Financial Aid*  
 Fred N. Landry, Ph.D., *Head, Division of Business and Technology*  
 Douglas Narby, Ph.D., *Head, Division of Liberal Arts*  
 David Pulling, M.A., *Director of Continuing Education*  
 David Simpson, Ph.D., *Director of Public Relations*  
 Marvette J. Thomas, Ed.D., *Director of Academic Assistance Programs*  
 Arlene C. Tucker, M.B.A., *Vice Chancellor for Business Affairs*  
 Ronald Wright, M.Ed., *Director of Information Technology,  
 Institutional Research, and Effectiveness*  
 Faculty Senate Chair, *ex officio*  
 Staff Senate Chair, *ex officio*

# ADMINISTRATION – ORGANIZATIONAL CHART



November 15, 2002

## **DEGREES**

---

---

### **DEGREES OFFERED – Fall 2002**

---

---

#### **CERTIFICATE PROGRAMS**

---

---

Arson Investigation  
Fire Science  
Office Practices and Procedures  
Diagnostic Medical Sonography

---

---

#### **ASSOCIATE DEGREE PROGRAMS**

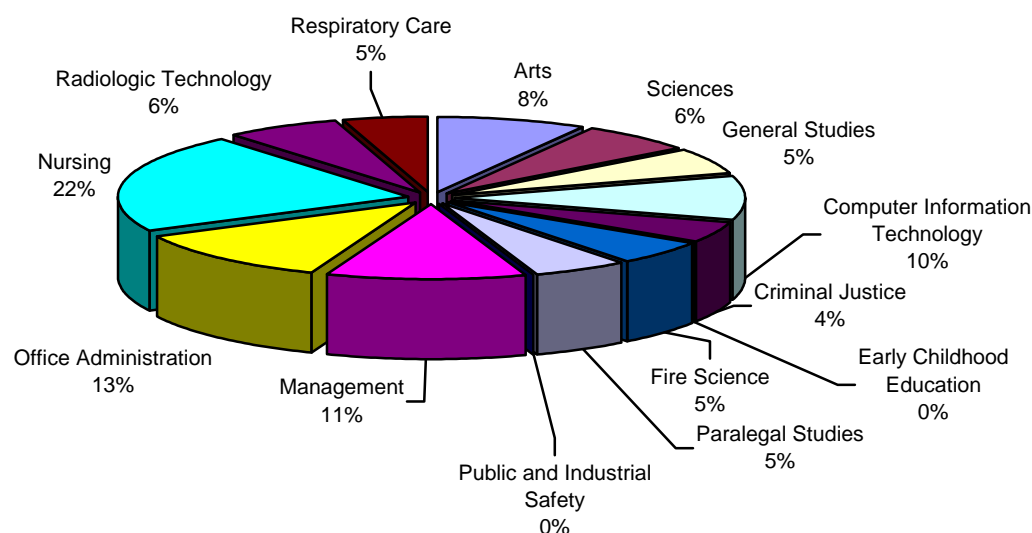
---

---

Associate of Arts  
Associate of Science  
Associate of General Studies  
Associate of Computer Information Technology  
Associate of Criminal Justice  
Associate of Early Childhood Education  
Associate of Fire Science  
Associate of Paralegal Studies  
Associate of Public and Industrial Security  
Associate of Management  
Associate of Office Administration  
Associate of Nursing  
Associate of Radiologic Technology  
Associate of Respiratory Care

# DEGREES

## DEGREES AWARDED – 2000/2001



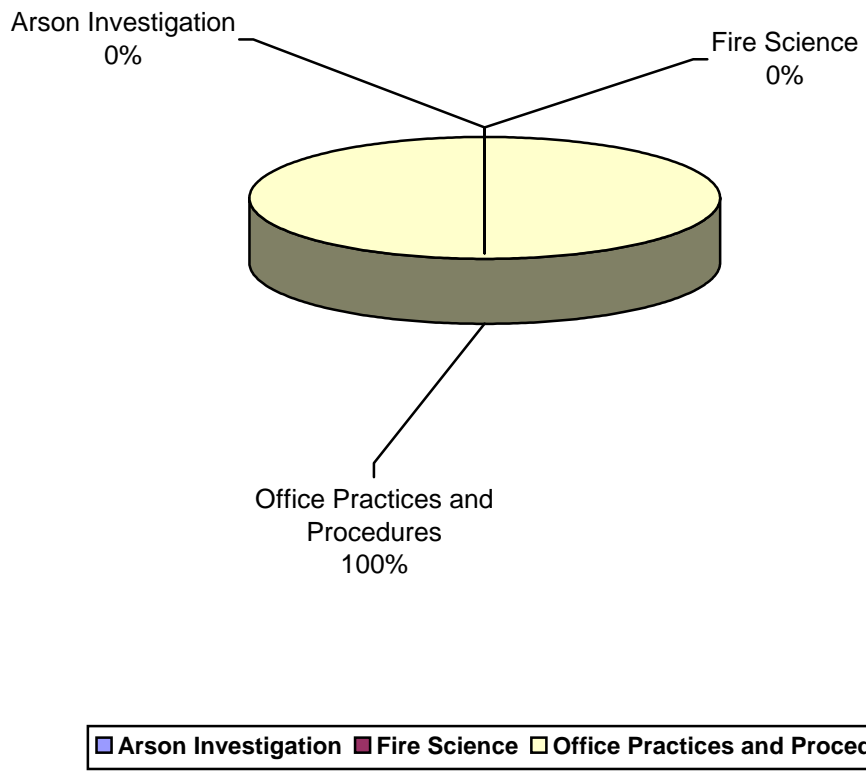
Arts	Sciences
General Studies	Computer Information Technology
Criminal Justice	Early Childhood Education
Fire Science	Paralegal Studies
Public and Industrial Safety	Management
Office Administration	Nursing
Radiologic Technology	Respiratory Care

Arts	23	Paralegal Studies	14
Sciences	18	Public and Industrial Security	0
General Studies	15	Management	31
Computer Information Technology	27	Office Administration	33
Criminal Justice	12	Nursing	59
Early Childhood Education	0	Radiologic Technology	18
Fire Science	15	Respiratory Care	13

\* Source: Louisiana Board of Regents Reporting System

# DEGREES

## CERTIFICATES AWARDED – 2000/2001



Arson Investigation	0
Fire Science	0
Office Practice and Procedures	5

\* Source: Louisiana Board of Regents Reporting System



## DEGREES

### ASSOCIATE DEGREES AWARDED: 1995-1996 / 2000-2001

Degree	00/01	99/00	98/99	97/98	96/97	95/96	Six Year Total
Arts	23	17	7	14	7	11	79
Sciences	18	16	15	22	24	37	132
General Studies	15	21	19	17	20	14	106
Computer Information Technology	27	17	14	14	4	11	87
Criminal Justice	12	20	4	11	14	8	69
Early Childhood Education	0	0	0	0	0	0	0
Fire Science	15	21	27	31	15	13	122
Paralegal Studies	14	11	7	6	0	0	38
Public and Industrial Safety	0	0	0	0	0	1	1
Management	31	22	28	25	17	10	133
Office Administration	33	38	39	37	31	37	215
Nursing	59	55	56	61	52	57	340
Radiologic Technology	18	24	20	39	15	14	130
Respiratory Care	13	15	14	10	6	6	64

### CERTIFICATES AWARDED: 1995-1996 / 2000-2001

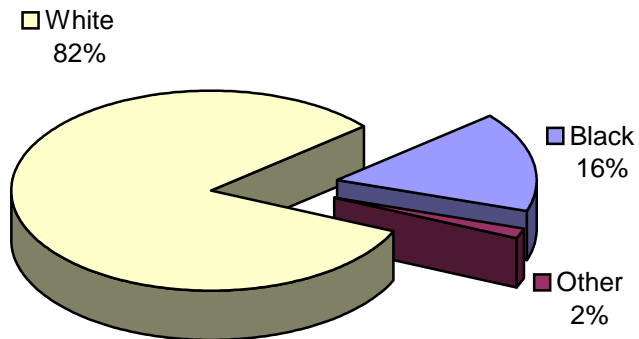
Degree	00/01	99/00	98/99	97/98	96/97	95/96	Five Year Total
Arson Investigation	0	1	5	7	0	3	16
Fire Science	0	2	5	3	0	0	10
Office Practices and Procedures	5	1	4	1	3	3	17

\* Source: Louisiana Board of Regents Reporting System

# DEGREES

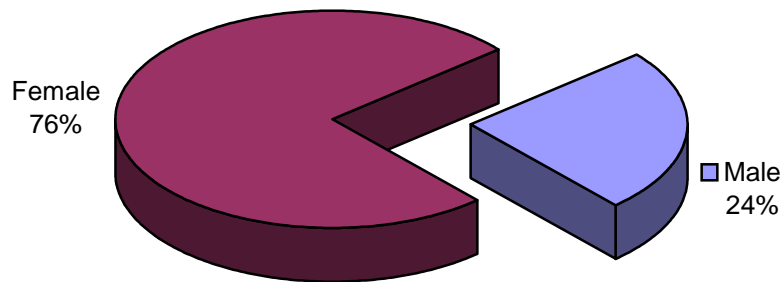
## BREAKDOWN BY RACE AND GENDER 2000/2001

### Associate Degrees Awarded by Race



Black	48
Other	5
White	246

### Associate Degrees Awarded by Gender



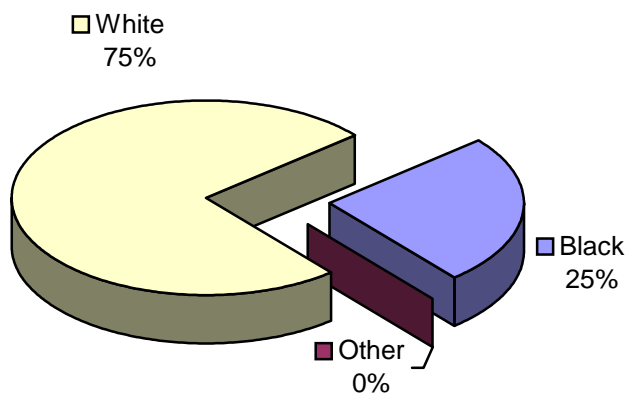
Male	73
Female	226

\* Source: Louisiana Board of Regents Reporting System

# DEGREES

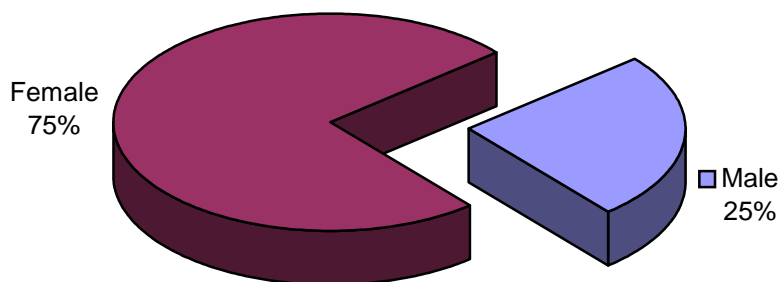
## BREAKDOWN BY RACE AND GENDER 2000/2001

### Certificates Awarded by Race



Black	1
Other	0
White	3

### Certificates Awarded by Gender



Male	1
Female	3

\* Source: Louisiana Board of Regents Reporting System

# STUDENTS

---

## ENROLLMENT SUMMARY – FALL 2002

	Males	Females	All Students
<b>Age</b>			
20 or less	476	910	1386
21-25	164	458	622
26-30	85	262	347
31-35	69	181	250
36-40	47	142	189
41 or over	67	283	350

**Average Age - 26.21**

### Race

Black	138	599	737
White	757	1575	2332
Other	13	62	75

### Reported ACT Scores

1-10	1	6	7
11-15	130	401	531
16-20	320	841	1161
21-25	172	304	476
26 and over	21	31	52

**Average ACT Score - 18.10**

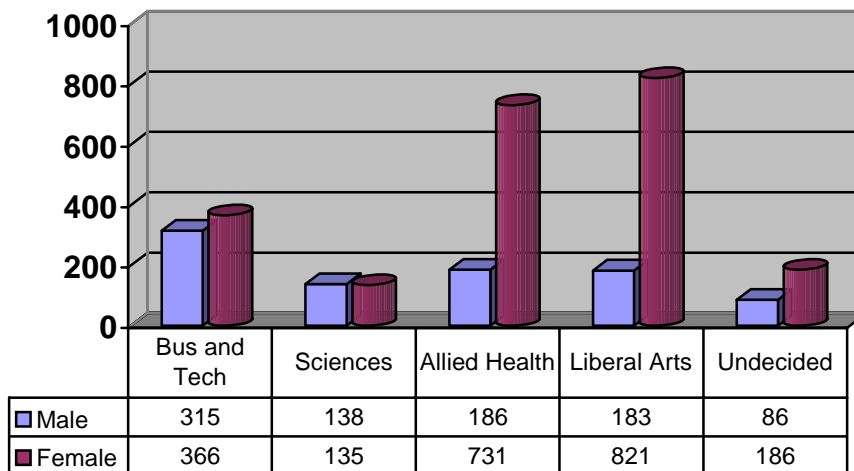
### College Major

Business	315	366	681
Sciences	138	135	273
Allied Health	186	731	917
Liberal Arts	183	821	1004
Undecided	86	183	269

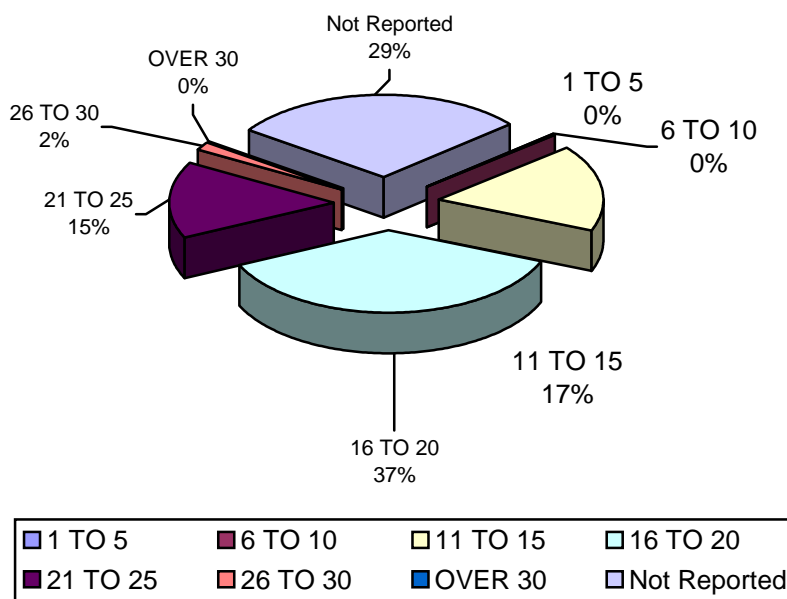
# STUDENTS

## ENROLLMENT – FALL 2002

### BREAKDOWN BY DIVISION AND GENDER



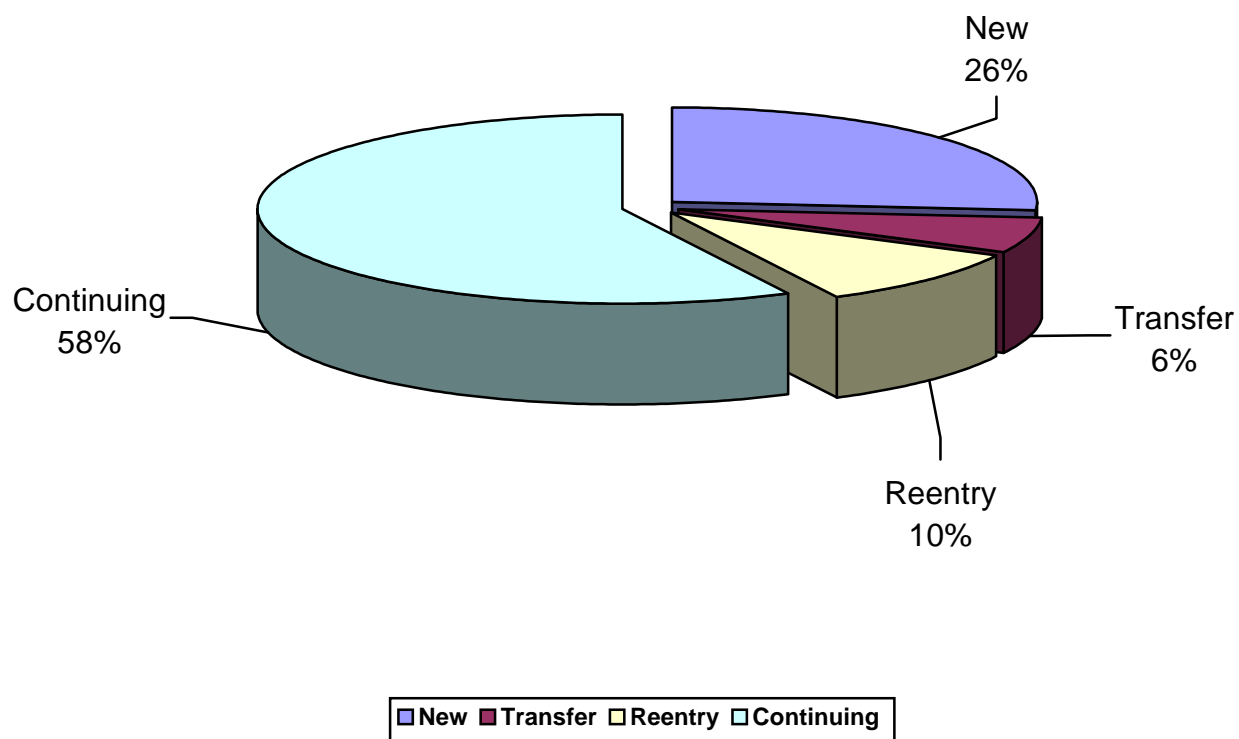
### Enrollment Breakdown by ACT Score



## STUDENTS

---

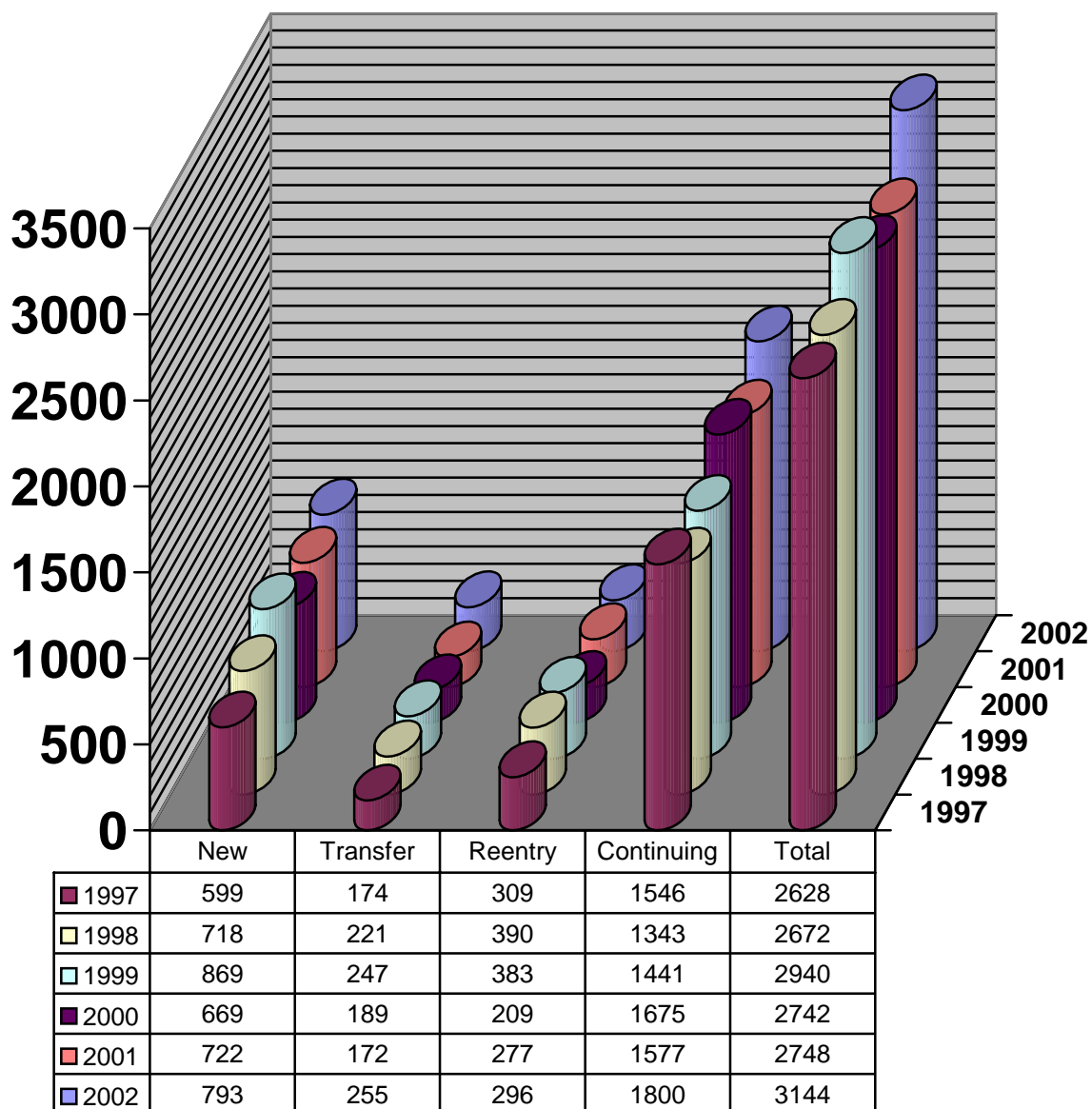
### ENROLLMENT BY ENTRY STATUS – FALL 2002



New	793
Transfer	255
Reentry	296
Continuing	1800
<b>TOTAL</b>	<b>3144</b>

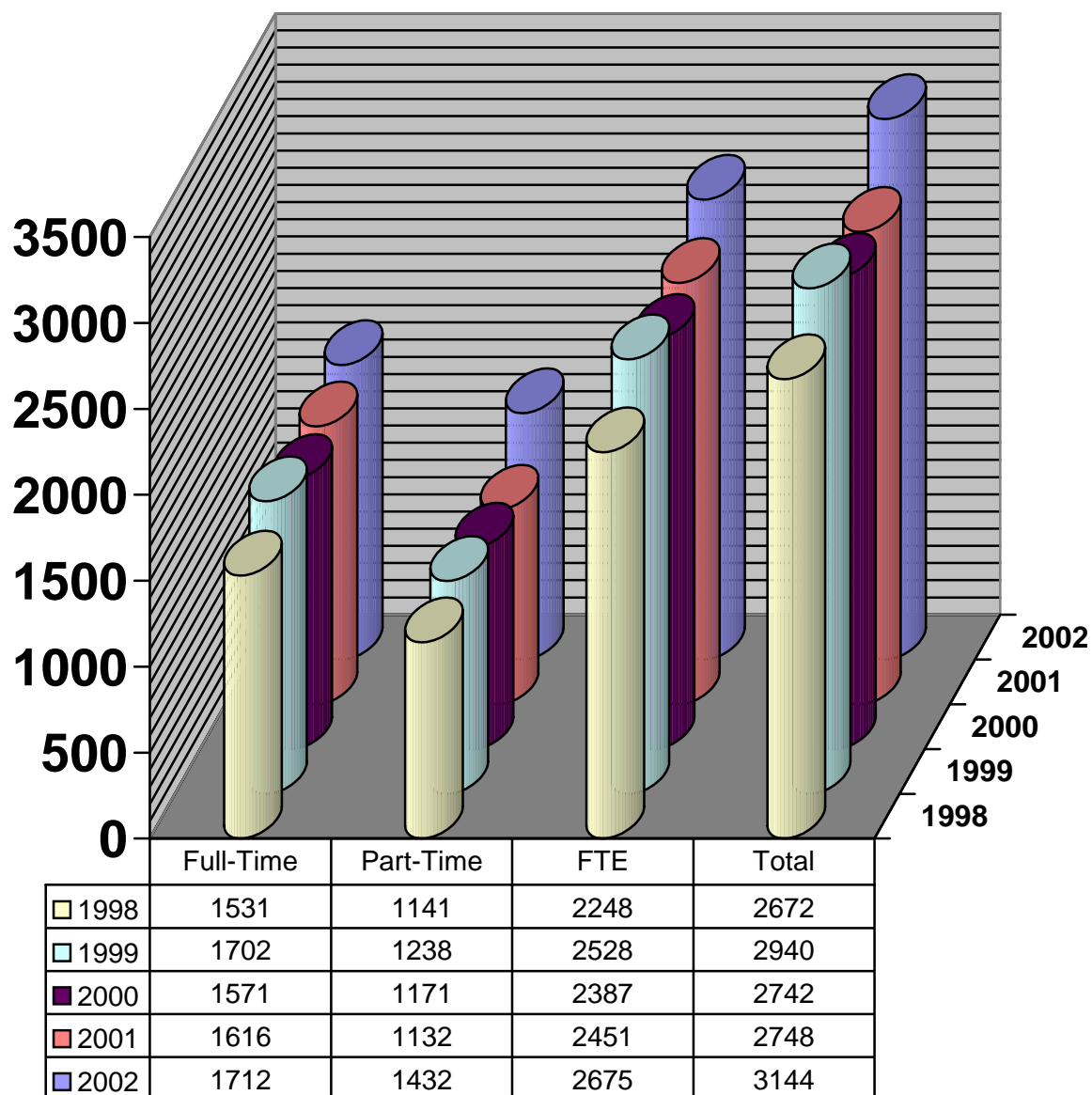
## STUDENTS

### BREAKDOWN BY ENROLLMENT STATUS 1996-2002



## STUDENTS

### ENROLLMENT BY FULL-TIME, PART-TIME, AND FTE 1998 - 2002





# STUDENTS

## ENROLLMENT BY CURRICULUM, RACE, AND GENDER – FALL 2002

### CERTIFICATE AND ASSOCIATE DEGREE PROGRAMS

Curriculum	Male				Female				Total			
	Black	White	Other	Total	Black	White	Other	Total	Black	White	Other	Total
Management	8	40	0	<b>48</b>	32	65	2	<b>99</b>	40	105	2	<b>147</b>
Office Admin	1	1	1	<b>3</b>	34	62	2	<b>98</b>	35	63	3	<b>101</b>
Computer Info Tech	11	41	0	<b>52</b>	26	33	2	<b>61</b>	37	74	2	<b>113</b>
Respiratory Care	3	10	0	<b>13</b>	14	37	2	<b>53</b>	17	47	2	<b>66</b>
PreNursing	11	48	2	<b>61</b>	131	270	9	<b>410</b>	142	318	11	<b>471</b>
Nursing	2	17	1	<b>20</b>	12	71	1	<b>84</b>	14	88	2	<b>104</b>
Radiologic Tech	17	68	4	<b>89</b>	23	155	2	<b>180</b>	40	223	6	<b>269</b>
General Studies	5	32	0	<b>37</b>	21	58	2	<b>81</b>	26	90	2	<b>118</b>
Criminal Justice	5	18	0	<b>23</b>	30	30	3	<b>63</b>	35	48	3	<b>86</b>
Paralegal Studies	1	2	0	<b>3</b>	13	27	2	<b>42</b>	14	29	2	<b>45</b>
Fire Science	19	132	2	<b>153</b>	8	14	1	<b>23</b>	27	146	3	<b>176</b>
Public and Ind. Sec.	0	1	0	<b>1</b>	0	1	0	<b>1</b>	0	2	0	<b>2</b>
<b>TOTAL</b>	<b>83</b>	<b>410</b>	<b>10</b>	<b>503</b>	<b>344</b>	<b>823</b>	<b>28</b>	<b>1195</b>	<b>427</b>	<b>1233</b>	<b>38</b>	<b>1698</b>

### TRANSFER PROGRAMS

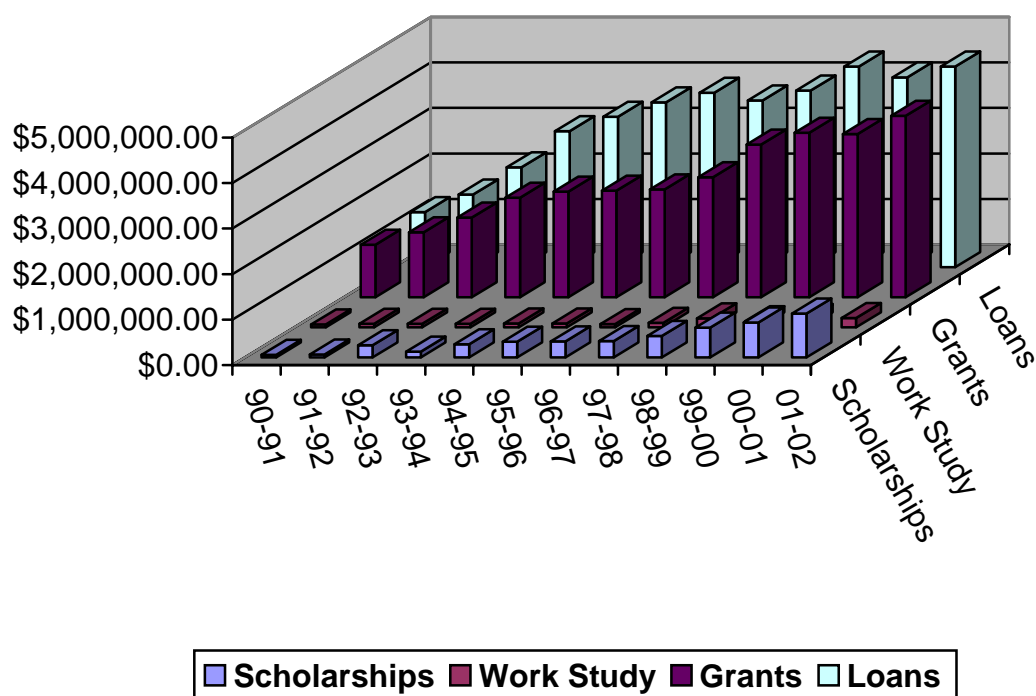
Curriculum	Male				Female				Total			
	Black	White	Other	Total	Black	White	Other	Total	Black	White	Other	Total
Business Admin	9	37	1	<b>47</b>	17	61	6	<b>84</b>	26	98	7	<b>131</b>
Education	21	60	1	<b>82</b>	149	360	12	<b>521</b>	170	420	13	<b>603</b>
Humanities/Soc Sci	7	30	0	<b>37</b>	22	84	7	<b>113</b>	29	114	7	<b>150</b>
Agriculture/Voc-ed	3	36	0	<b>39</b>	4	11	1	<b>16</b>	7	47	1	<b>55</b>
Engineering	1	25	0	<b>26</b>	2	1	0	<b>3</b>	3	26	0	<b>29</b>
Natural Sciences	2	27	1	<b>30</b>	4	23	1	<b>28</b>	6	50	2	<b>58</b>
Pre-Professional	5	53	0	<b>58</b>	19	71	3	<b>93</b>	24	124	3	<b>151</b>
<b>TOTAL</b>	<b>48</b>	<b>268</b>	<b>3</b>	<b>319</b>	<b>217</b>	<b>611</b>	<b>30</b>	<b>858</b>	<b>265</b>	<b>879</b>	<b>33</b>	<b>1177</b>

### UNDECIDED

Curriculum	Male				Female				Total			
	Black	White	Other	Total	Black	White	Other	Total	Black	White	Other	Total
<b>TOTAL</b>	<b>7</b>	<b>79</b>	<b>0</b>	<b>86</b>	<b>38</b>	<b>141</b>	<b>1</b>	<b>183</b>	<b>45</b>	<b>220</b>	<b>4</b>	<b>269</b>

## STUDENTS

### STUDENT FINANCIAL AID / 1990-1991 through 2001-2002



	90-91	91-92	92-93	93-94	94-95	95-96
<b>Scholarships</b>	\$57,100	\$68,900	\$271,500	\$127,000	\$291,100	\$350,000
<b>Work Study</b>	\$66,700	\$77,000	\$77,000	\$77,000	\$87,000	\$87,000
<b>Grants</b>	\$1,155,700	\$1,427,900	\$1,752,600	\$2,184,200	\$2,323,000	\$2,338,500
<b>Loans</b>	\$1,205,800	\$1,593,100	\$2,189,900	\$2,988,100	\$3,300,000	\$3,622,000

	96-97	97-98	98-99	99-00	00-01	01-02
<b>Scholarships</b>	\$355,000	\$361,500	\$476,300	\$655,100	\$766,000	\$965,000
<b>Work Study</b>	\$72,800	\$102,500	\$201,400	\$135,800	\$185,400	\$205,700
<b>Grants</b>	\$2,368,100	\$2,637,100	\$3,353,200	\$3,614,800	\$3,586,800	\$3,984,900
<b>Loans</b>	\$3,827,300	\$3,660,800	\$3,881,000	\$4,405,800	\$4,170,900	\$4,409,300

# STUDENTS

## ENROLLMENT BY LOUISIANA PARISH - FALL 2002

<b>Acadia Parish</b>	<b>717</b>	<b>St. Landry Parish</b>	<b>983</b>
Allen Parish	106	St. Martin Parish	77
Ascension Parish	3	St. Mary Parish	8
Avoyelles Parish	19	St. Tammany Parish	13
Beauregard Parish	10	Tangipahoa Parish	1
Caddo Parish	1	Terrebonne Parish	1
Calcasieu Parish	28	Union Parish	1
Caldwell Parish	2	Vermilion Parish	89
Cameron Parish	2	Vernon Parish	4
East Baton Rouge Parish	32	Washington Parish	1
East Feliciana Parish	3	Webster Parish	1
<b>Evangeline Parish</b>	<b>412</b>	West Baton Rouge Parish	2
Franklin Parish	1	West Feliciana Parish	1
Grant Parish	3	Non-Louisiana Resident	19
Iberia Parish	59		
Iberville Parish	7		
Jefferson Davis Parish	127		
Jefferson Parish	6	<b>Total Enrollment</b>	<b>3144</b>
Lafayette Parish	315		
Lafourche Parish	10		
Lincoln Parish	2		
Livingston Parish	5		
Morehouse Parish	1		
Natchitoches Parish	2		
Orleans Parish	1		
Ouachita Parish	26		
Pointe Coupee Parish	21		
Rapides Parish	12		
Red River Parish	1		
Richland Parish	2		
Sabine Parish	1		
St. Helena Parish	1		
St. James Parish	1		
St. John Parish	4		

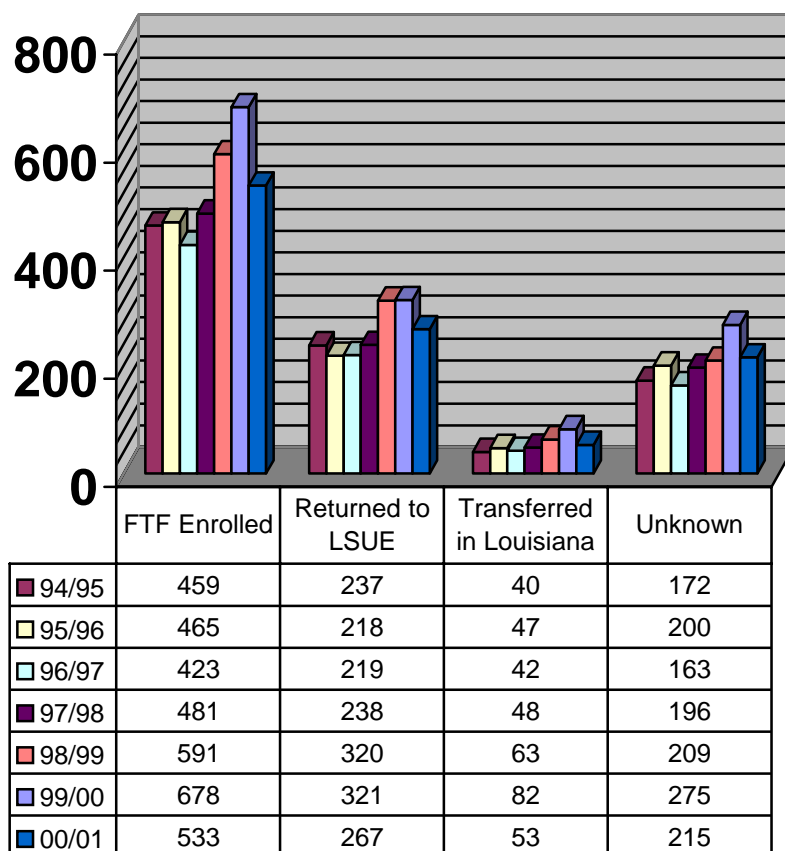


## STUDENTS

### FALL-TO-FALL RETENTION OF FIRST-TIME FULL-TIME STUDENTS

Initial Enrollment	FTF Enrolled	Returned to LSUE	Transferred in Louisiana	Unknown	Retention Rate
94/95	459	237	40	172	62.5%
95/96	465	218	47	200	57.0%
96/97	423	219	42	163	61.5%
97/98	481	238	48	196	59.3%
98/99	591	320	63	209	64.6%
99/00	678	321	82	275	59.4%
00/01	533	267	53	215	59.7%

- Source: Louisiana Board of Regents Statewide Student Profile System



# STUDENTS

## GRADUATION RATES AND STUDENT PERSISTENCE

### FIRST-TIME FULL-TIME STUDENTS

Session	Percentage of Students Receiving the Degree in a Given Number of Years						
	Less than 3 Years	3 years	4 years	5 years	6 years	7 Years	8 Years
FALL 94	2.4	9.8	13.4	15.2	15.6	16.3	16.5
FALL 95	2.3	8.0	11.9	13.0	13.6	13.8	
FALL 96	3.7	11.5	14.5	15.2	13.8		
FALL 97	4.4	10.2	13.7	15.6			
FALL 98	4.6	10.5	14.9				
FALL 99	3.1	9.9					

### FIRST-TIME FULL-TIME ASSOCIATE DEGREE SEEKING STUDENTS

Session	Percentage of Students Receiving the Degree in a Given Number of Years						
	Less than 3 Years	3 years	4 years	5 years	6 years	7 Years	8 Years
FALL 94	2.2	9.6	13.7	15.9	16.6	17.2	17.5
FALL 95	3.0	9.1	12.4	13.3	14.2	14.2	
FALL 96	3.6	13.7	18.1	18.9	19.3		
FALL 97	5.8	14.4	19.2	19.9			
FALL 98	5.6	16.4	19.8				
FALL 99	8.2	12.4					

### PERSISTENCE DATA ON ALL FIRST-TIME FRESHMEN STUDENTS

Session	# FF	Students Continuing in Subsequent Years							
		1995	1996	1997	1998	1999	2000	2001	2002
FALL 94	640	289	175	87	45	39	18	19	18
FALL 95	791		299	195	98	73	44	27	35
FALL 96	637			276	181	81	40	31	29
FALL 97	599				288	166	75	47	46
FALL 98	718					376	196	105	63
FALL 99	869						379	219	115
FALL 00	792							378	229
FALL 01	826								420

# FACULTY

## FACULTY PROFILE - FALL 2002

### FACULTY DISTRIBUTION

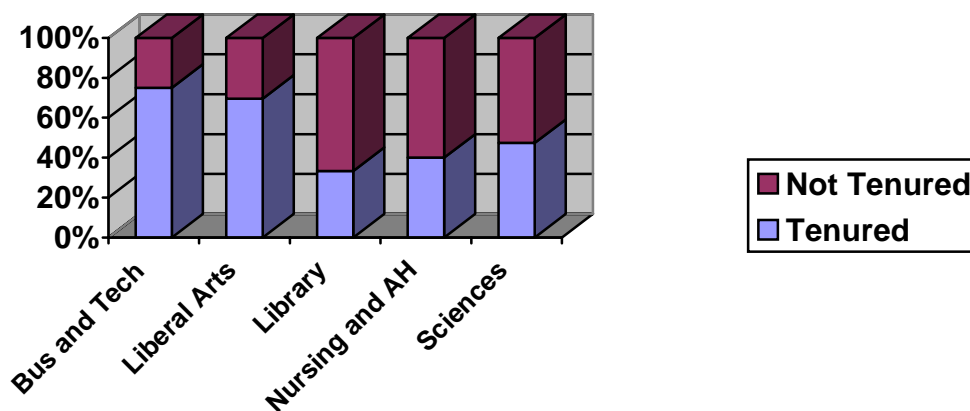
Division	Full-time	Part-time	Total
Business and Technology	8	20	28
Liberal Arts	23	30	53
Library	3	0	3
Nursing and Allied Health	15	3	18
Sciences	19	10	29
<b>TOTAL</b>	<b>68</b>	<b>63</b>	<b>131</b>

Professional employees with academic rank were not included in these numbers

### DISTRIBUTION OF FULL-TIME FACULTY BY ACADEMIC RANK

Division	Professor	Associate Professor	Assistant Professor	Instructor	Tenured
Business and Technology	3	3	2	0	6
Liberal Arts	8	8	3	4	16
Library	0	2	0	1	1
Nursing and Allied Health	2	3	2	8	6
Sciences	5	2	6	6	9
<b>TOTAL</b>	<b>18</b>	<b>18</b>	<b>13</b>	<b>19</b>	<b>38</b>

Percentage of Full-Time Tenured Faculty by Division



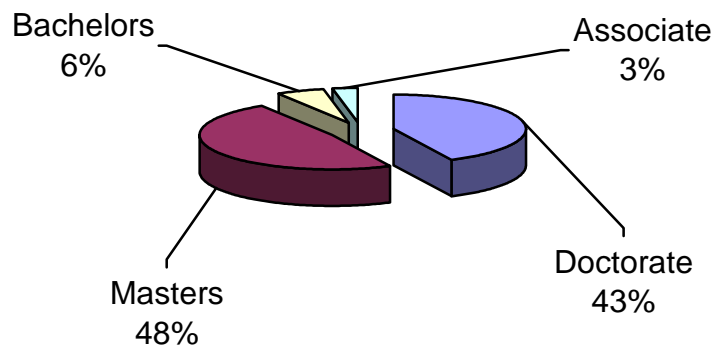
Source: Academic Affairs

# FACULTY

---

## FACULTY PROFILE - FALL 2002

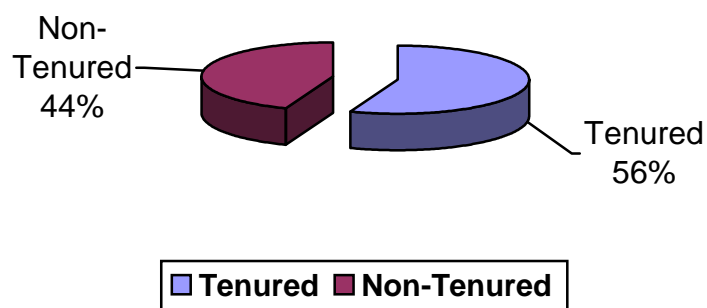
### Highest Degree Earned by Full-Time Faculty



Source: Academic Affairs

---

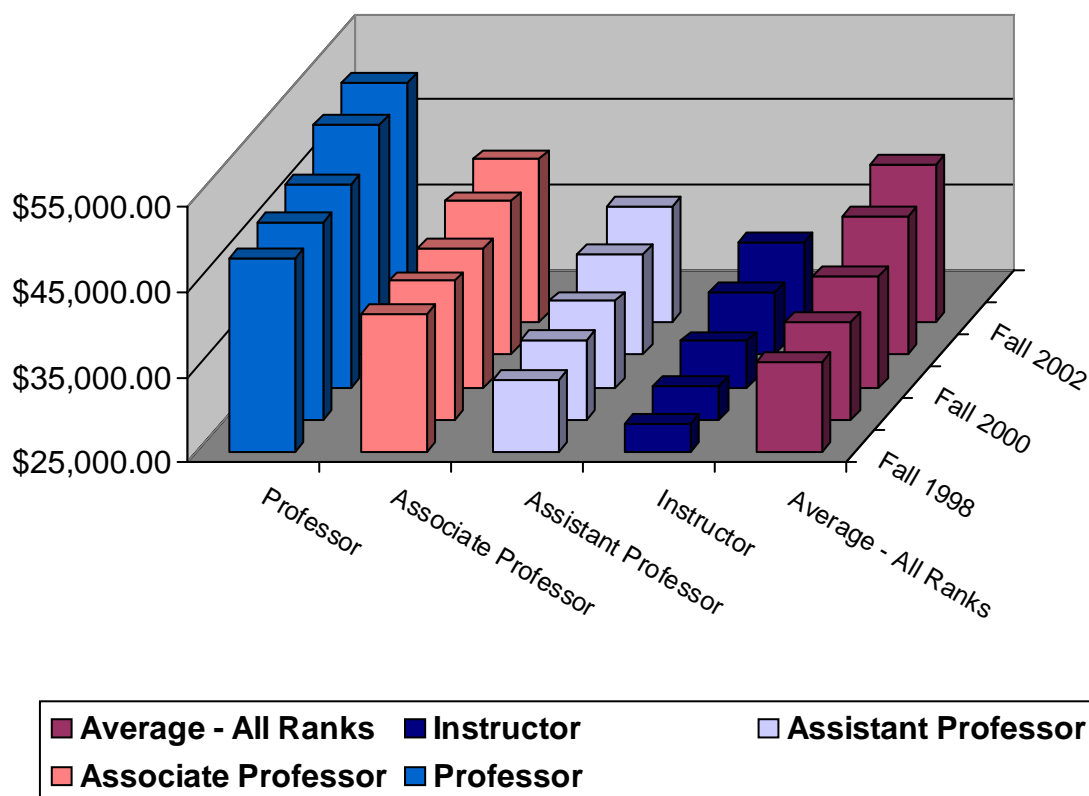
### Percentage of Tenured Full-Time Faculty Members



Source: Academic Affairs

## FACULTY

### AVERAGE FACULTY SALARY BY RANK 1998 - 2002



	FALL 1998	FALL 1999	FALL 2000	FALL 2001	FALL 2002
<b>Professor</b>	\$47,660	\$48,176	\$48,857	\$52,047	\$53,205
<b>Associate Professor</b>	\$41,124	\$41,211	\$41,393	\$43,031	\$44,168
<b>Assistant Professor</b>	\$33,381	\$34,251	\$35,101	\$36,824	\$38,684
<b>Instructor</b>	\$28,342	\$28,858	\$30,412	\$32,410	\$34,417
<b>Average – All Ranks</b>	\$35,422	\$36,486	\$38,107	\$41,365	\$43,538

Source: Business Affairs



# STAFF

---

## STAFF PROFILE - FALL 2002

### FULL-TIME

	Male		Female		Total	Minorities	
	N	%	N	%		N	%
Executive / Administrative	3	75	1	25	4	1	25
Professional Non-Faculty	9	33	18	67	27	12	44
Secretarial / Clerical	0	0	27	100	27	5	19
Skilled Crafts	7	100	0	0	7	3	43
Service / Maintenance	15	60	10	40	25	14	56
<b>TOTAL</b>	<b>34</b>	<b>38</b>	<b>56</b>	<b>62</b>	<b>90</b>	<b>35</b>	<b>39</b>

### PART-TIME

	Male		Female		Total	Minorities	
	N	%	N	%		N	%
Executive / Administrative	0	0	0	0	0	0	0
Professional Non-Faculty	0	0	0	0	0	0	0
Secretarial / Clerical	0	0	3	100	3	0	0
Skilled Crafts	0	0	0	0	0	0	0
Service / Maintenance	0	0	1	100	1	1	100
<b>TOTAL</b>	<b>0</b>	<b>0</b>	<b>4</b>	<b>100</b>	<b>4</b>	<b>1</b>	<b>100</b>

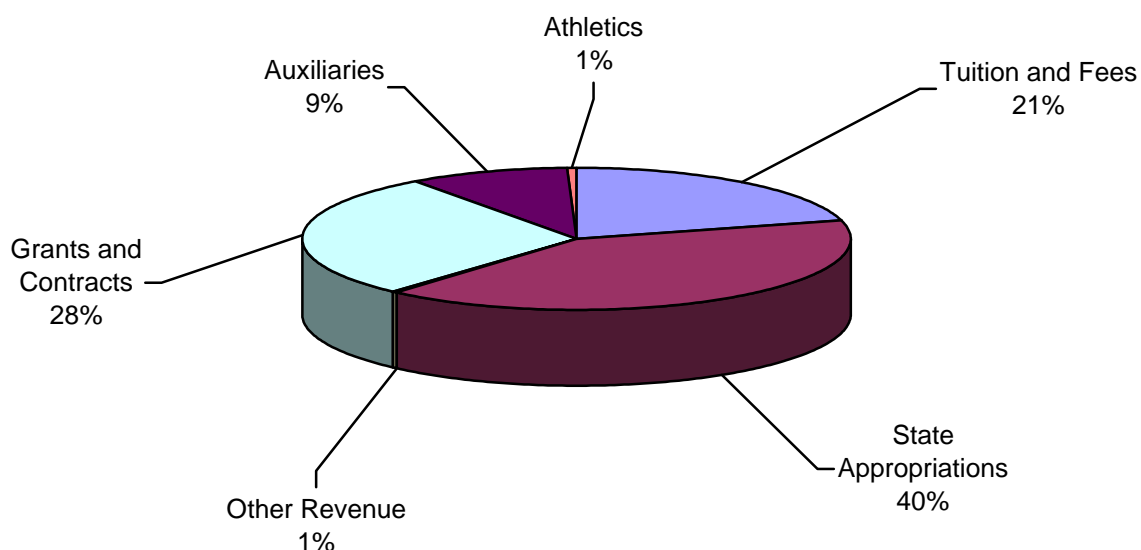
### TOTAL

	Male		Female		Total	Minorities	
	N	%	N	%		N	%
Executive / Administrative	3	75	1	25	4	1	25
Professional Non-Faculty	9	33	18	67	27	12	44
Secretarial / Clerical	0	0	30	100	30	5	17
Skilled Crafts	7	100	0	0	7	3	43
Service / Maintenance	15	58	11	42	26	15	58
<b>TOTAL</b>	<b>34</b>	<b>36</b>	<b>60</b>	<b>64</b>	<b>94</b>	<b>36</b>	<b>38</b>

Source: Human Resources

## BUDGET

### BUDGETED REVENUE – FY 02/03

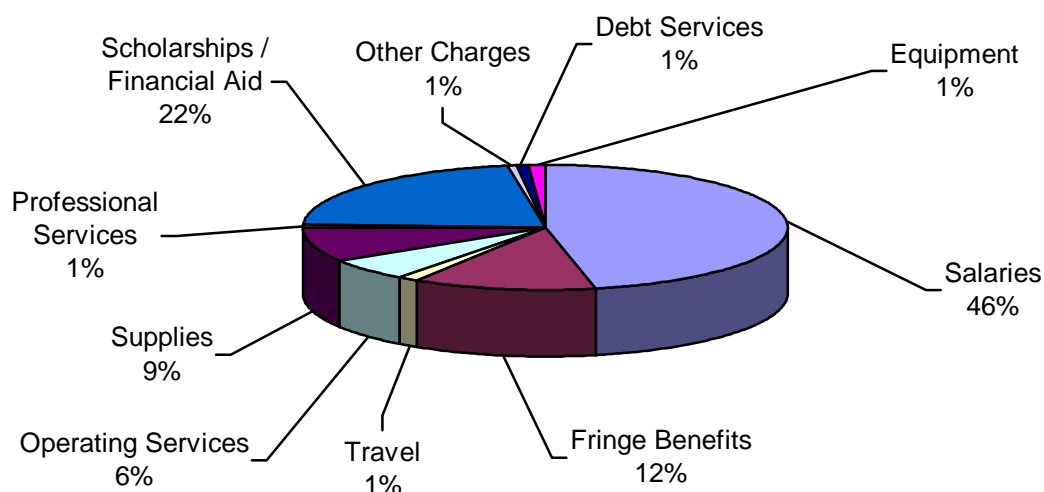


Category	Unrestricted	Restricted	Total
Tuition and Fees	\$3,323,922		\$3,323,922
State Appropriations	\$6,426,571		\$6,426,571
Other Revenue	\$81,900		\$81,900
Grants and Contracts		\$4,500,000	\$4,500,000
Auxiliaries		\$1,472,924	\$1,472,924
Athletics		\$108,000	\$108,000
<b>TOTAL</b>	<b>\$9,832,393</b>	<b>\$6,080,924</b>	<b>\$15,913,317</b>

Source: Business Affairs

## BUDGET

### BUDGETED EXPENDITURES – FY 02/03

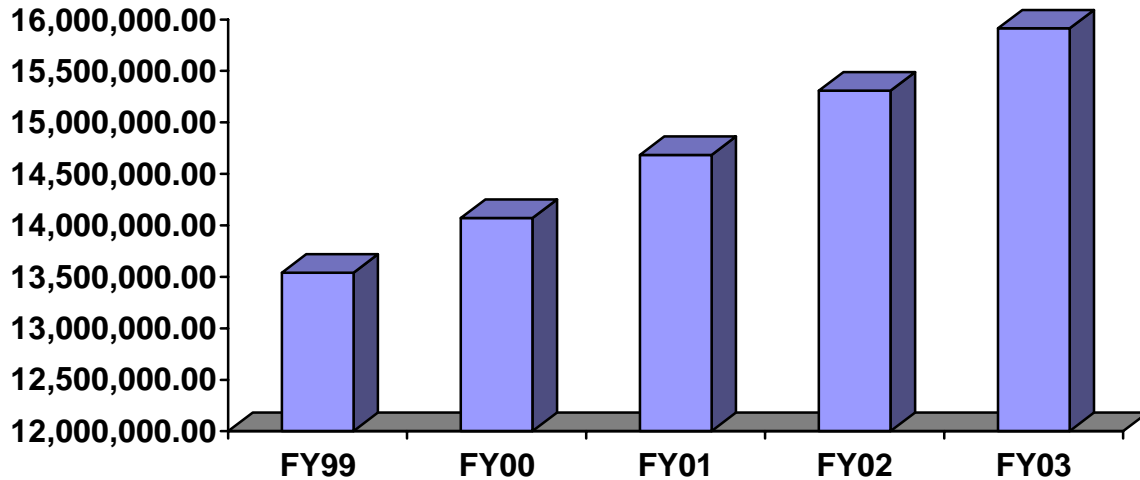


Category	Unrestricted	Auxiliary	Restricted	Total
Salaries	\$6,643,500	\$211,624	\$587,432	\$7,442,556
Fringe Benefits	\$1,766,516	\$29,800	\$124,425	\$1,920,741
Travel	\$121,406	\$38,000	\$47,500	\$206,906
Operating Services	\$847,680	\$63,500	\$42,873	\$953,053
Supplies	\$263,773	\$1,084,000	\$93,454	\$1,414,227
Professional Services	\$22,302	\$1,500	\$95,217	\$119,019
Scholarships / Financial Aid	\$107,683		\$3,367,014	\$3,474,697
Other Charges	\$15,480	\$17,500	\$58,121	\$91,101
Debt Services		\$135,000		\$135,000
Equipment	\$71,053		\$83,964	\$155,017
<b>TOTAL</b>	<b>\$9,832,393</b>	<b>\$1,580,924</b>	<b>\$4,500,000</b>	<b>\$15,913,317</b>

Source: Business Affairs

## BUDGET

### REVENUE – ALL SOURCES FY 1999 - 2003



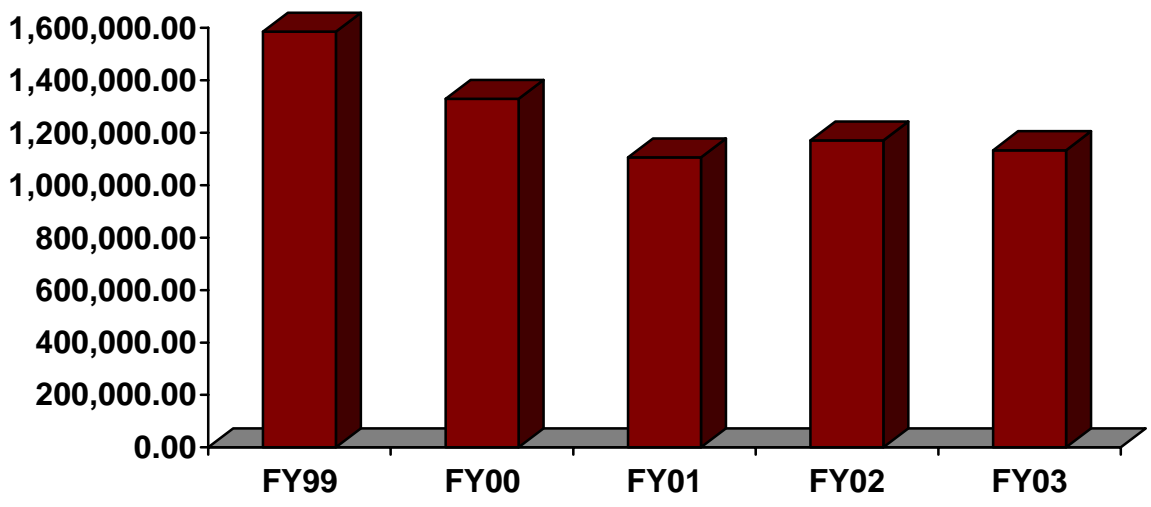
Fiscal Year	Unrestricted	Auxiliary	Restricted	Total
98/99	\$7,220,229	\$1,594,136	\$4,725,842	\$13,540,207
99/00	\$7,432,786	\$1,884,862	\$4,755,244	\$14,072,892
00/01	\$7,906,948	\$1,816,682	\$4,961,747	\$14,685,377
01/02	\$8,597,522	\$1,901,282	\$4,808,661	\$15,307,465
02/03 ( <i>Budgeted</i> )	\$9,832,393	\$1,580,924	\$4,500,000	\$15,913,317

Source: Business Affairs

# GRANTS AND CONTRACTS

---

## GRANTS AND CONTRACT AWARDED FY 1999 - 2003

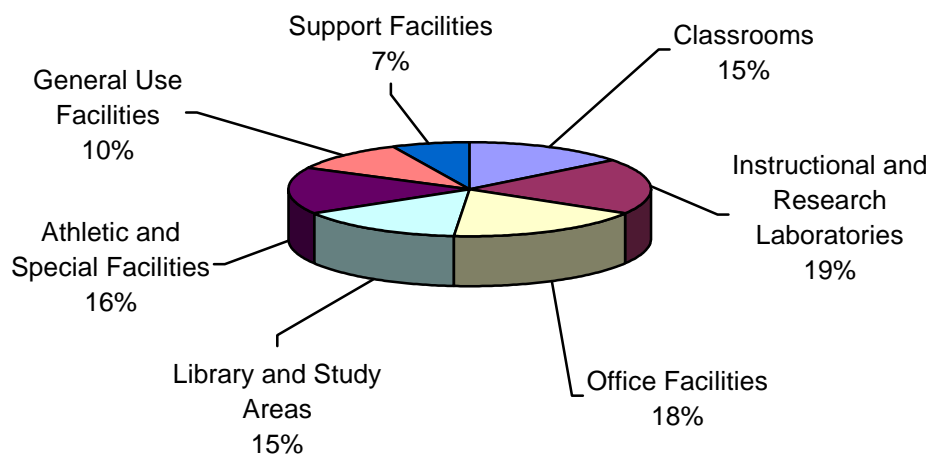


Fiscal Year	Amount
98/99	\$1,585,048
99/00	\$1,328,901
00/01	\$1,105,864
01/02	\$1,170,028
02/03 (Budgeted)	\$1,132,986

Source: Business Affairs

## Physical Facilities

### ASSIGNABLE SPACE BY TYPE

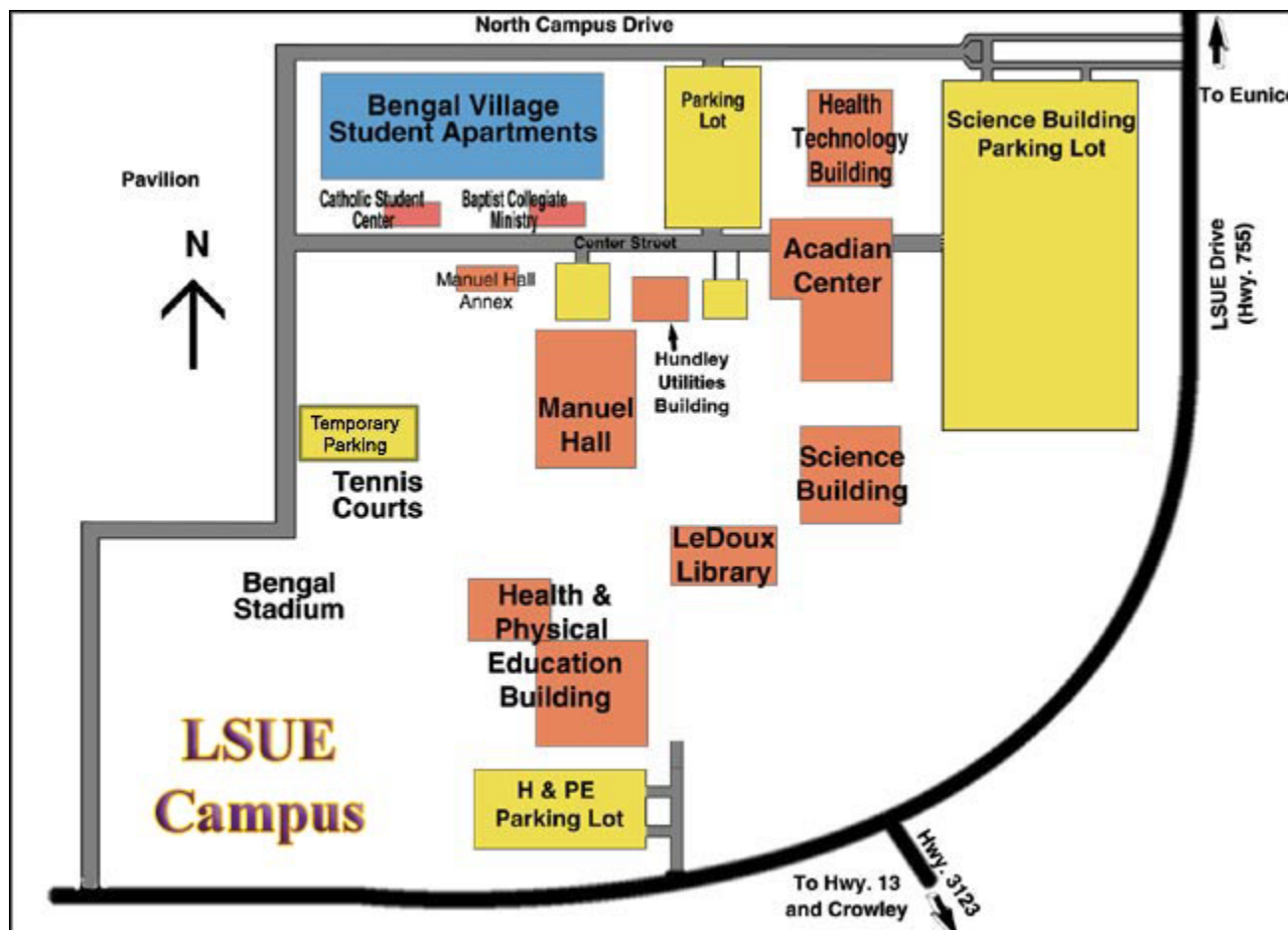


Use of Space	Assignable Square Feet	% of Total
Classrooms	24,789	13%
Instructional and Research Laboratories	38,836	20%
Office Facilities	34,358	18%
Library and Study Areas	28,585	15%
Athletic and Special Facilities	31,329	16%
General Use Facilities (food service, lounge, exhibition areas)	24,458	13%
Supporting Facilities (warehouses, computer facilities, physical plant)	9,546	5%
<b>TOTAL</b>	<b>191,901</b>	<b>100.00%</b>

\* Source: Board of Regents Facilities Inventory System: Fall 2001

## Physical Facilities

### UNIVERSITY CAMPUS



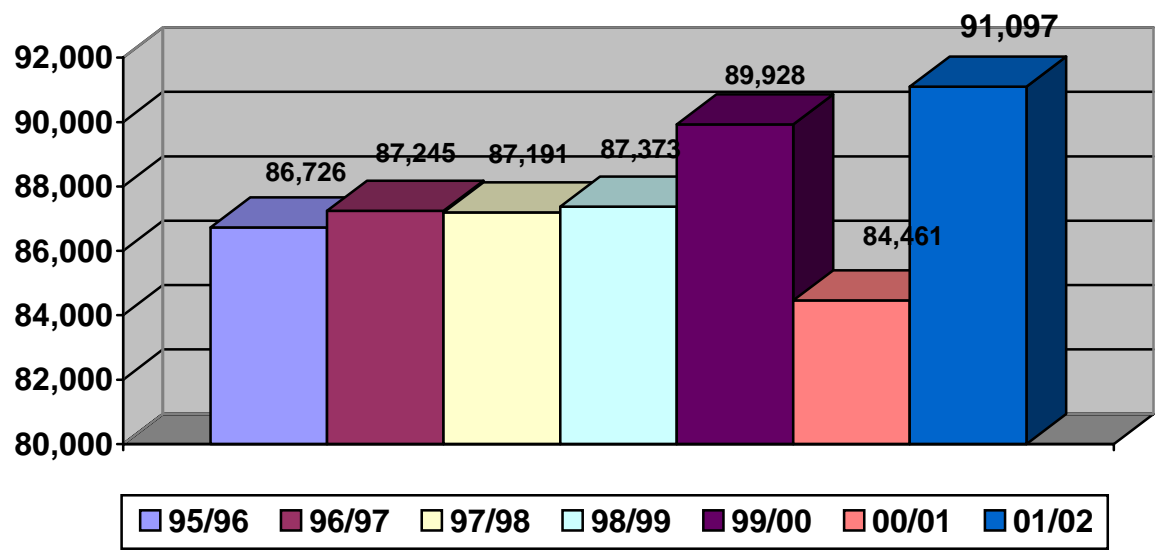
### Main Campus Offices

- Admissions, Manuel Hall, Room 102
- Business and Technology Division, Manuel Hall, Room 205
- Business Affairs Office, Science Building, Room 111
- Chancellor's Office, Science Building, Room 105
- Continuing Education Office, Health and PE Building, Room 109
- Financial Aid Office, Acadian Center, Room 110
- Information Technology / Institutional Research, Manuel Hall, Room 105
- Liberal Arts Division, Manuel Hall, Room 147
- Nursing and Allied Health Division, Health Technology Building, Room 104
- Registrar, Manuel Hall, Room 102
- Sciences Division, Science Building, Room 207
- Student Affairs Office, Acadian Center, Room 112

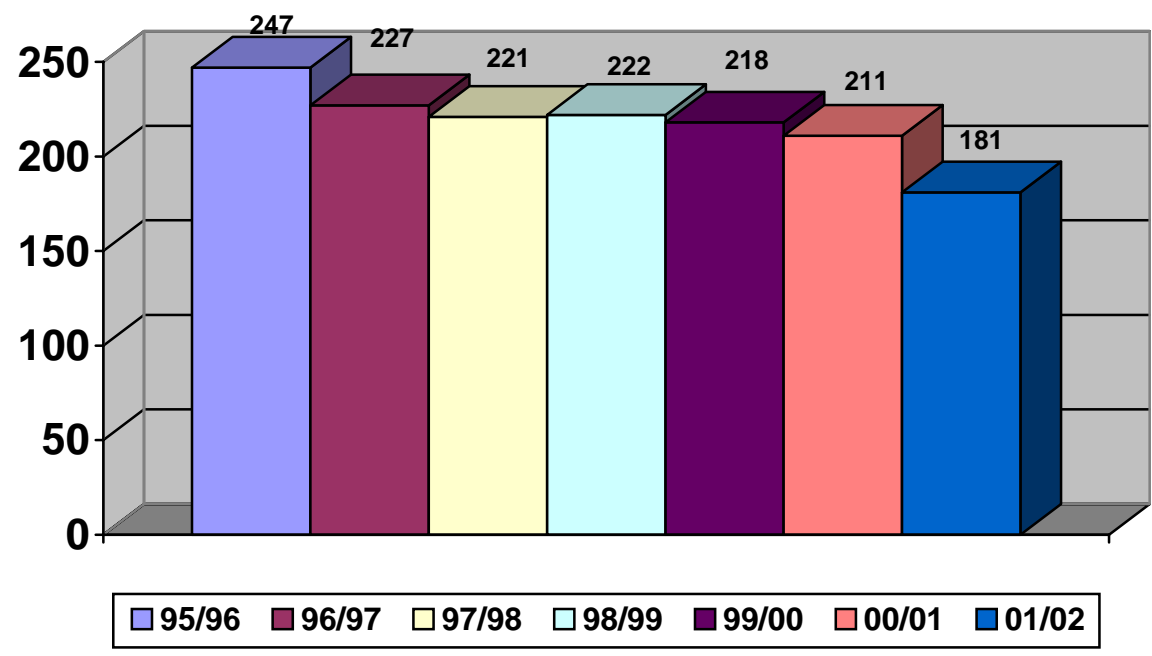
# LEDOUX LIBRARY

## LIBRARY HOLDINGS - 1995/1996 THROUGH 2001/2002

### Volumes



### Serial Subscriptions





## LEDOUX LIBRARY

---

### LIBRARY OVERVIEW - 1995/1996 THROUGH 2001/2002

#### LIBRARY HOLDINGS

Year	Volumes	Subscriptions	Federal Documents
1995/1996	86,726	247	126,142
1996/1997	87,245	227	127,851
1997/1998	87,191	221	124,257
1998/1999	87,373	222	124,142
1999/2000	89,928	218	125,724
2000/2001	84,641	211	128,188
2001/2002	91,097	181	130,433

#### CIRCULATION

Year	95/96	96/97	97/98	98/99	99/00	00/01	01/02
Number of Volumes	10,536	8,789	8,778	7,976	7,018	6,223	5,192

#### INTERLIBRARY LOAN

Year	95/96	96/97	97/98	98/99	99/00	00/01	01/02
Loaned to Others	112	60	21	21	1	360	2
Borrowed from Others	242	216	202	202	250	0	55

\* Source: LSUE Library